

静电防护技术与应用
宁楚智能科技

CEAEA 中国防静电



东科集团
DONGKE GROUP



防静电专业装备
PSTP

防静电智能应用

ESD Intelligent Application



中国静电防护技术科技产业园
(军民融合科技产业园)



东莞市宁楚智能科技有限公司
DONGGUAN NEACHO INTELLIGENT TECHNOLOGY CO., LTD.

防静电专业装备

ESD Professional Equipment



中国静电防护技术科技产业园
(军民融合科技产业园)



宁楚(上海)智能科技有限公司
NEACHO (SHANGHAI) INTELLIGENT TECHNOLOGY CO., LTD.



做服务 TO SERVE YOU
WE ARE SERIOUS

我们是认真的！



有一种服务叫：一站式防静电解决方案

有一群伙伴叫：中国防静电协会

有一类合作叫：专业的人做专业的事~~！

A kind of service: anti-static solution in one station

A group of partners: China anti-static Association

A kind of cooperation: the professionals handle professional issues

静电防护技术体验展示中心:

上海市闵行区春申路2525号3幢319室

东莞市常平镇常朗路66号中国防静电大楼308室

Electrostatic Protection Technology Experience Exhibition Center:

Room 319, Chunshen Road No. 2525, Minhang District, Shanghai, CHINA

Room 308, China Anti-static Building, No. 66 Chang Lang Road, Changping Town,

Dongguan, CHINA

WEB: <http://www.neacho.com> www.neacho.com

<http://neacho.1688.com> esds2020.1688.com

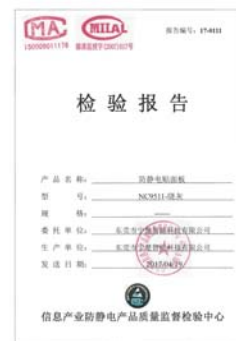
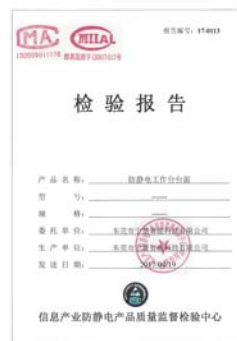
TEL: +86-21-80399257 +86-21-33682568 (上海Shanghai)

+86-769-83906900 (东莞Dongguan)



我们的优势

OUR ADVANTAGE



防静电技术要求参考标准:

防静电操作系统技术要求 QJ 1950

防静电安全工作台技术要求 QJ 2177

电子元器件制造防静电技术要求 SJ/T10630

电子设备制造防静电技术要求 SJ/T 10533

防静电贴面板通用规范 SJ/T 11236

防静电培训认证参考标准:

中国国家军标 GJB3007A

电子产品制造防静电系统测试方法 SJ/T 10694

美国国家标准学会/静电放电协会标准 ANSI/ESD S20.20

国际电工委员会标准 IEC61340



集团公司发展历程

DEVELOPMENT PROCESS OF GROUP COMPANY

- 2018** 宁楚全体伙伴再接再厉，勇攀高峰
- 2017** 东莞市宁楚智能科技有限公司成立
宁楚东莞公司成为中国防静电协会会员单位
获得防静电装备产品生产、销售、施工资质
静电防护智能监控系统相关专利申请
整体防静电工作台及附件相关专利申请
- 2016** 宁楚（上海）智能科技有限公司成立
主营防静电工作台、防静电装备产品的研发、设计、生产、工程施工及销售
“宁楚”“NEACHO”品牌商标注册
宁楚上海公司成为中国防静电协会会员单位
自主研发防静电智能电动升降工作台
自主研发智能防静电多功能监控手腕带
- 2015** 江苏威利集团防静电原材料产品的突破
防静电树脂粉末，防静电指数稳定持久
防静电地板蜡，性能及稳定性优于国际同类产品
- 2014** 苏州威士利丁材料科技有限公司成立
引进多条全套数控自动化流水线，
包括水性涂装线、底漆封闭线、中涂线、油漆金属喷涂线、UV转印线、辊涂涂装线、复合冷压线，拥有年生产保温装饰一体化板150万平方米的生产能力
- 2009** 苏州家俊创业建筑节能有限公司成立
主营建筑装潢装饰、建筑智能化、机电设备钢结构等工程
- 2009** 苏州市威利建筑涂料有限公司成立
专业生产合成树脂乳液涂料，包括丙烯酸酯系列、硅丙系列和氟碳系列，内外墙涂料、砂壁状涂料、真石漆及仿花岗岩系列艺术涂料
- 2000** “威利士”品牌商标注册
- 1992** 苏州木渎镇建厂



宁楚官方公众平台



01



26年工程项目规划实施经验

26 years of project planning and implementation experience

02



15年静电防护技术与现场应用实践经验

15 years of ESD technology and field application experience

03



专业、高效、快速的服务响应

Professional, efficient and fast service response

04



灵活的设计、研发、创新机制

Flexible design, research and development, innovation mechanism

05



规范的行业资源整合体系

Standardized industry resource integration system



- 007 防静电工作区的构成及技术要求
Structure and technical requirements of EPA
- 009 静电防护接地系统
Electrostatic protection grounding system
- 011 整体防静电工作台
Whole antistatic workbench
- 057 防静电环保无味无油型台垫
Anti-static and environmet-friendly and oil-free table mats
- 059 防静电工作椅
Anti-static chair
- 065 线网架和防静电推车
Chrome wire mesh shelf and anti-static trolley
- 067 防静电储物柜
Anti-static storage cabinet

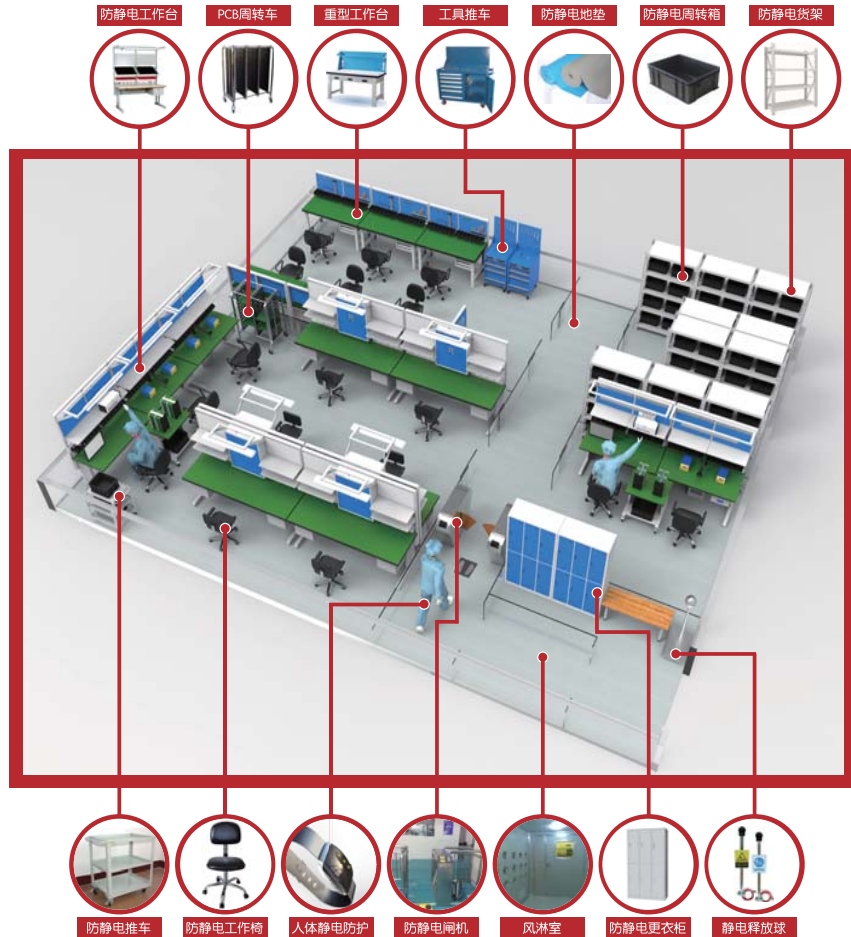
- 069 防静电加强型整理柜
Anti-static strengthening type cabinet
- 071 防静电流利条货架
Anti-static flow rack
- 073 防静电仓储货架
Anti-static storage rack
- 075 防静电注塑周转箱
Anti-static injection turnover box
- 077 静电防护用品
Electrostatic protective equipment
- 079 防静电陶瓷地板
Anti-static ceramic floor
- 081 防静电PVC地板和橡胶地板
Anti-static PVC floor and rubber floor

防静电工作区（EPA）的构成与技术要求

Composition and Technical Requirements of Electrostatic Discharge Protected Area (EPA)

防静电工作区定义：配备各种防静电装备（用品）和设置接地系统（等电位连接）、能限制静电的积累和电位、具有确定边界和专门标记的生产、维护、存储、使用、装配 SSD 的场所。通常 EPA 构建要求，GJB3007A 里对 HBM 模型试验 100V 以上的 SSD 提供保护；ANSI/ESD S20.20 里对 CDM 模型试验 200V 以上的 SSD 提供保护。

Definition of Electrostatic Discharge Protected Area: the place equipped with all kinds of anti-static equipment (supplies) and setting earth system (equipotential connection), the ability to limit the accumulation and potential of static electricity, production, maintenance, storage, use, and assembly SSD with defined boundaries and special markings. Usually EPA build requirements, GJB3007A provides protection for the HBM model test of the SSD above 100V. ANSI/ESD S20.20 provides protection for the SSD of the CDM model test above 200V.



EPA的硬件组成和要求：

- (1) 环境控制系统：温度16~28℃，湿度45%~75%，大气压强86~106KPa
- (2) 防静电接地系统：接地电阻 $< 10 \Omega$ ，交流阻抗 $< 1 \Omega$
- (3) 防静电地面：防静电地坪、防静电地垫、防静电PVC地板、防静电陶瓷地板等
- (4) 防静电作业必备装备：防静电工作台、防静电工作椅等
- (5) 防静电辅助装备：防静电推车、防静电货架、防静电周转设备、防静电周转容器等
- (6) 人体静电防护：专业的静电防护技术培训，防静电衣服、防静电鞋子、防静电帽子、防静电手套等
- (7) 静电监控系统：防静电智能监控手腕带、智能静电防护接地监控系统
- (8) 静电测量系统：人体综合测试仪、静电工程测试仪、接地电阻测试仪、离子平衡测试仪

The hardware composition and requirements of EPA:

- (1) Environmental control system: temperature 16~28℃, humidity 45%~75%, atmospheric pressure 86~106KPa
- (2) ESD grounding system: grounding resistance $< 10 \Omega$, AC impedance $< 1 \Omega$
- (3) ESD ground: ESD floor, ESD ground mat, ESD PVC floor, ESD ceramic floor, etc.
- (4) The necessary equipment for ESD operation: ESD workbench, ESD chair, etc.
- (5) ESD auxiliary equipment: ESD trolley, ESD rack, ESD turnover equipment, ESD turnover vessel, etc.
- (6) Electrostatic protection of human body: professional training of electrostatic protection technology, ESD clothing, ESD shoes, ESD hats, ESD gloves and so on
- (7) Electrostatic monitoring system: ESD intelligent monitoring wristing, intelligent electrostatic protection grounding monitoring system
- (8) Electrostatic measurement system: human body comprehensive tester, electrostatic engineering tester, grounding resistance tester, ion balance tester



EPA的软件与管理要求：

- (1) 制订静电防护培训大纲、定期组织人员培训、规范日常作业要求
- (2) 制订防静电工艺、工程设计文件与验收要求
- (3) 建立完整的静电防护质量保证体系（包含监督检查、试验、静电防护认证体系）
- (4) 防静电警示标识及管理，铺设静电防护警戒线，悬挂静电防护警示标牌
- (5) 静电敏感器件、元件或产品的包装、储存、运输
- (6) 产品的失效分析与记录，查找问题根源
- (7) 静电防护装备性能点检与记录，已失效装备需立即更换，避免产品风险
- (8) 接地及连接系统要求和指导
- (9) 所用SSD静电敏感度分级与使用指南

EPA's software and management requirements:

- (1) Formulating the training syllabus for electrostatic protection, training regular personnel and standardizing daily operation requirements
- (2) Formulation of ESD technology, engineering design documents and acceptance requirements
- (3) Establish a complete quality assurance system for electrostatic protection (including inspection, test, and electrostatic protection certification system)
- (4) ESD warning signs and management, the laying of electrostatic guard lines, suspended electrostatic warning signs
- (5) Packaging, storage and transportation of electrostatic sensitive devices, components, or products
- (6) Failure analysis and recording of products and finding the root of the problem
- (7) The performance of the electrostatic protective equipment is checked and recorded. The lost equipment needs to be replaced immediately to avoid the product risk
- (8) Requirements and guidance for grounding and connection systems
- (9) Guidelines for the classification and use of SSD's electrostatic sensitivity

静电防护接地系统

Electrostatic Protection Grounding System

电子工业的EPA独立的静电防护接地系统由接地电极和接地线共同组成。接地体是直接
与大地接触的金属导体或金属导体组；接地线是用来连接接地物体和接地电极的导线。

电阻值不大于 $10\ \Omega$ （SJ/T10694《电子产品制造与应用系统防静电检测通用规范》）

The EPA independent electrostatic protection system of the electronic industry is composed of ground
electrode and grounding wire. The grounding body is a metal conductor or a metal conductor contact directly
to the earth; grounding wire is a wire used to connect ground objects and grounding electrodes.

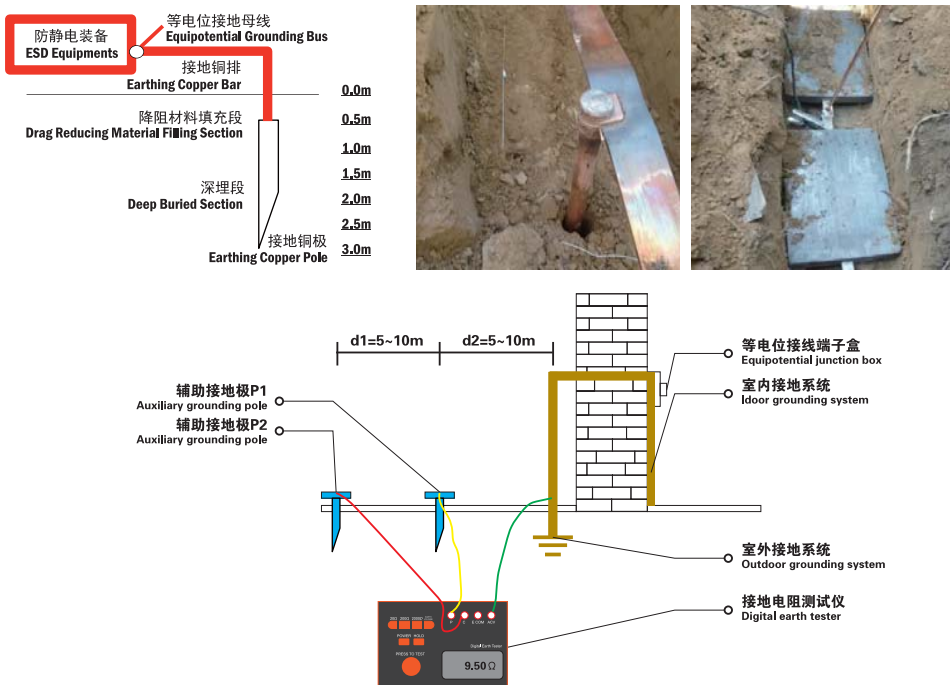
Resistance value is not more than $10\ \Omega$ (SJ/T10694 "general specification for anti static detection of
electronic products manufacturing and application systems")

EPA内接地的作用：

- (1) 接地点的电位被视为零电位，可作为各种电压信号的比较基准
- (2) 接地表面作为各种信号电路的返回电流的通道
- (3) 将电磁能量泄放大地，防止电磁辐射的干扰
- (4) 用来连接设备金属外壳，保护人员不受伤害

The electrostatic protection grounding requirements of EPA:

- (1) The potential of the junction is regarded as a zero potential, which can be used as a reference for a variety
of voltage signals.
- (2) The passage of the ground surface as the return current of a variety of signal circuits.
- (3) Discharge the electromagnetic energy into the earth to prevent the interference of electromagnetic radiation.
- (4) It is used to connect the metal shell of the equipment, and the protection personnel are not injured.



EPA静电防护接地要求

EPA electrostatic protection grounding requirements

- (1) 在共用接地系统中，各类接地不允许混接和搭接，应联接到各自的接地汇流母线或局部
等电位接地端子排，然后再连接到各类接地的共用总等电位接地端子排，再与共用接地
极相连接
- (2) 防静电工作区域的防静电接地系统必须采取防静电等电位联接，同时与其它接地系统等
电位连接
- (3) 每个防静电装备引出的防静电接地支线应单独与防静电接地干线或防静电接地汇流母线
相联接，不允许串联联接
- (4) 防静电接地连接系统宜采用裸导线（编织扁铜带、铜排），以便检查和维护，若采用带
有绝缘外皮，则外皮颜色宜为黄绿双色
- (5) 防静电地面、墙面等设置的防静电接地支线不少于两条，防静电地与防静电装备的连接
必须保证一定接触面积
- (6) 接地各线路的相互联接可采用钎焊、锡熔焊、压力连接等牢固、可靠方式，不应简单缠
绕连接，各连接点的接触电阻值小于 $0.1\ \Omega$
- (7) 腕带（在保护电阻之后的连线）接地线电阻不大于 $2\ \Omega$
- (8) ANSI/ESD S20.20规定：设备接地电阻 $< 1\ \Omega$ （至接地极交流电阻）；辅助接地电阻
（至公共接地端电阻） $< 25\ \Omega$ ；防静电等电位接地电阻 $< 1 \times 10^9\ \Omega$ （静电接地和设备接
地点相连接）
- (9) IEC61340-5-1规定：设备接地极和防静电接地极可共用，设备接地线的电阻应不大于 $2\ \Omega$

- (1) In the common earthing system, various grounding does not allow mixing and overlapping, should
be attached to the respective grounding busbar or local equipotential earthing terminal row, and
then share the total equipotential connected to various grounding terminals, and then
connected to a common grounding electrode.
- (2) The anti static grounding system in the anti static working area must be connected with the
electrostatic potential and equipotential connection with other grounding systems.
- (3) The anti-static grounding branch drawn by each anti-static device should be connected to the
anti-static earthing main line or the anti-static grounding busbar separately, and no serial
connection is permitted.
- (4) Anti electrostatic grounding system should adopt the bare wire (copper and copper), so as to
check and maintain, if used with insulation jacket, then skin color should be yellow green color.
- (5) There are no less than two anti-static grounding branches installed on anti-static ground, wall
and so on. The connection between anti-static ground wire and anti-static equipment must
ensure a certain contact area.
- (6) The connection between all the grounding lines can be made by means of soldering, tin melting
and welding, pressure connection and so on. It should not be simply wound and connected.
The contact resistance values of each connection point are less than $0.1\ \Omega$.
- (7) The earthing resistance of the wristband (after the protection of the resistance) is not more than
 $2\ \Omega$.
- (8) ANSI/ESD S20.20 stipulates that the grounding resistance of the device is less than $1\ \Omega$ (to the
AC resistance of the grounding electrode), the auxiliary grounding resistance (to the common
grounding terminal resistance) is less than $25\ \Omega$, and the anti-static equipotential grounding
resistance is less than $1 \times 10^9\ \Omega$ (electrostatic grounding and equipment location).
- (9) IEC61340-5-1 stipulates that the grounding electrode of the equipment and the anti static
grounding electrode can be shared, and the resistance of the grounding wire of the equipment
should not be more than $2\ \Omega$.

整体防静电型工作台

Whole antistatic Workbench

宁楚智能科技一直致力于静电防护技术及应用的研究，隶属于江苏威利集团，专业从事防静电装备生产、销售、施工为一体的厂家，拥有上海、广东多地防静电装备产品体验展示中心。宁楚智能科技生产的防静电装备产品能让用户有效避免研发、生产过程中静电带给静电敏感器件的损伤，同时给用户带来舒适、安全、可靠的生产环境。

宁楚智能科技的防静电工作台基于国外知名公司的设计理念演变而来，并结合国内外客户现场实际需求改进，人性化设计提高工作效率，模块化设计可任意调整生产以适应各种变化的需求，静电防护技术专业化能快速为生产企业排忧解难。

宁楚智能科技已在国内外拥有广泛的经销商渠道，一直在为全球几十个国家和地区提供从设计到生产到施工的静电防护技术与应用一站式服务。

NEACHO intelligent technology has been committed to the research of electrostatic protection technology and application. It belongs to the Wiley group of Jiangsu. It specializes in the production, sale and construction of antistatic equipment. It has many antistatic equipment products experience exhibition centers in Shanghai and Guangdong. Ningchu intelligent technology produces anti-static equipment products, which can effectively avoid static damage caused by static electricity to users in research and production process, and at the same time, provide users with comfortable, safe and reliable production environment.

NEACHO intelligent technology anti-static table based on the design concept of a company in Finland evolved, and combined with the improvement of domestic and foreign customers actual demand, humanized design and improve work efficiency, modular design can adjust production to meet the changing needs of electrostatic protection professional production enterprises can quickly for additional grief.

NEACHO intelligent technology has been widely distributed at home and abroad, and has been providing one-stop service for design, production and construction of electrostatic protection technology and applications for dozens of countries and regions in the world.

- 防静电工作台所有部件均为长效型防静电材料制作，本身摩擦不起静电，保证防静电十年稳定性
- 所有防静电工作台独特的静电导泄路径设计，实现静电纵向泄放至大地，从根本上杜绝静电对产品带来的危害
- 所有部件标准化设计，灵活互换、自由组合，适应柔性化生产工艺要求中的各种变化，经济实用
- 防静电工作台可用于万级净化车间，适用于试验、电装、焊接、调试、钳工、包装等各项工作
- 宁楚智能科技研发、设计、生产的防静电工作台不仅实用更为美观，常被用户赞誉为“实用的艺术品”
- All the components of the anti static working table are made of long-acting antistatic materials, and their friction can not afford the static electricity, and the stability of the anti static electricity is guaranteed for ten years.
- The unique electrostatic discharge path of all anti - static worktable is designed to realize static discharge to the earth and eliminate the harm to the product from the static electricity.
- All components standardized design, flexible interchangeability, free combination, adapt to the flexible production process requirements of various changes, economic and practical.
- Anti static table can be used in the 10000 level purification workshop, suitable for testing, electrical loading, welding, debugging, fitter, packaging and other work.
- NEACHO intelligent technology research and development, design, production of antistatic workbench is not only practical and more beautiful, often praised by the users as " Practical Works of Art " .

标准通用型工作台

Standard general type worktable



M (Lenth: 1200mm)

2M (Lenth: 1530mm or 1830mm)

3M (Lenth: 2280mm)



技术参数 Technical data

产品型号 Product model	M1200	2M750	2M900	3M750
防静电性能 ESD property	1 × 10 ⁵ ~ 1 × 10 ⁶ Ω			
部件颜色 Parts color	灰白色 / 蓝色 Gray / Blue			
环境湿度 Ambient humidity	10 ~ 35℃			
环境湿度 Ambient humidity	15 ~ 75%			
外形尺寸 Shape size	长L 600/750/900	1530 600/750/900	1830 600/750/900	2280 600/750/900
高H	高度依支撑类型而定 Height depends on the type of support			

整体防静电台面板 Whole anti static table-top

- 标准台面厚度25mm、50mm可选
- 双面防静电防火板贴面，采用纳米级长效防静电材料制作而成
- 导电内芯板，选用环保E1级刨花板
- Standard table-top thickness 25mm or 50mm
- Double-sided anti static fire board veneer, made of nanoscale long-term antistatic material
- Selection of environmental E1 grade particleboard for conductive inner core board



技术参数 Technical data

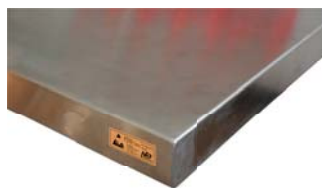
产品编号 Product NO.	NCD01260	NCD01275	NCD01290	NCD01560	NCD01575	NCD01590	NCD01860	NCD01875	NCD01890	NCD02260	NCD02275	NCD02290
产品型号 Product model	1200*600	1200*750	1200*900	1530*600	1530*750	1530*900	1830*600	1830*750	1830*900	2280*600	2280*750	2280*900
防静电性能 ESD property	1 × 10 ⁸ ~1 × 10 ⁹ Ω											
颜色 Color	面：灰白色；封边：灰白色、榉木色、黑色 Face: gray white; edge: gray white, beech color, black											
环境温度 Ambient temperature	10~35℃											
环境湿度 Ambient humidity	15~75%											
外形尺寸 Shape size (mm)	长L	1200	1200	1200	1530	1530	1530	1830	1830	1830	2280	2280
	宽W/D	600	750	900	600	750	900	600	750	900	600	750
	高H	25/50	25/50	25/50	25/50	25/50	25/50	25/50	25/50	25/50	25/50	25/50
应用描述 Application description	整体防静电工作台必备，实现整体防静电性能，静电释放更安全更实用 The anti-static table required to achieve the overall antistatic performance, ESD is safer and more practical.											

钢制包面台面板 Steel surface table-top

- 钢制包面台面厚度25mm、50mm可选，台面尺寸参照整体防静电台面板
- 采用1.5mm优质冷轧钢板或304不锈钢板制作而成，表面可作防静电烤漆
- 导电内芯板，选用环保E1级刨花板
- Standard table-top thickness 25mm or 50mm, table-board size reference to overall anti static table-board
- Made of 1.5mm high quality cold rolled steel plate or 304 stainless steel plate, the surface can be used as antistatic paint
- Selection of environmental E1 grade particleboard for conductive inner core board



防静电烤漆钢制包面台面板
Antistatic paint steel surface table-top



不锈钢包面台面板
Stainless steel surface table-top

防静电复合台面板 Anti static composite surface table-top

- 防静电复合台面厚度25mm、50mm可选，台面尺寸参照整体防静电台面板
- 采用2mm防静电复合材料贴面制作而成
- 导电内芯板，选用环保E1级刨花板
- Anti static composite surface table-top thickness 25mm or 50mm, table-board size reference to overall anti static table-board
- Made of 2mm antistatic composite surface
- Selection of environmental E1 grade particleboard for conductive inner core board



防静电灰色皮纹台面板
Anti static gray striae surface table-top



防静电绿色皮纹台面板
Anti static green striae surface table-top



防静电绿色荔枝纹台面板
Anti static green litchi surface table-top



防静电绿色平纹台面板
Anti static green plain surface table-top



防静电灰色平纹台面板
Anti static gray striae surface table-top



防静电蓝色平纹台面板
Anti static blue litchi surface table-top



防静电高配抽屉 ESD high-end drawer

- 每层抽屉均匀承载能力：35kg，内置间隔板，便于物品分类
- 配合三节滚珠滑轨，抽屉可100%拉出
- 在工作台左、中、右位置悬挂安装
- Uniform carrying capacity of each drawer: 35kg, built-in compartment, easy to classify items
- With three ball slide rails, drawers can be pulled out of 100%
- Suspension installation at the left, middle and right position of the workbench



DS375
高配单层抽屉
High-end single drawer



DD375
高配双层抽屉
High-end double drawer



DT375
高配三层抽屉
High-end three drawer

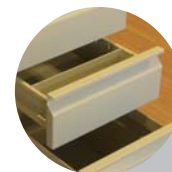
技术参数 Technical data

产品编号 Product NO.	NCH23701	NCH23702	NCH23703
产品型号 Product model	DS375	DD375	DT375
防静电性能 ESD property	1 × 10 ⁵ ~1 × 10 ⁶ Ω		
颜色 Color	灰白色/蓝色 Gray / Blue		
环境温度 Ambient temperature	10~35℃		
环境湿度 Ambient humidity	15~75%		
外形尺寸 Shape size	长L 585 宽W/D 194 高H	375 585 345	375 585 496
应用描述 Application description	工作台标配，用于放置工具、文具等物品 The standard configuration of a workbench for placing tools, stationery, etc.		



防静电高配活动柜 ESD high-end movable cabinet

- 每层抽屉均匀承载能力：35kg，内置间隔板，便于物品分类
- 配合三节滚珠滑轨，抽屉可100%拉出
- 可选导电脚杯或导电脚轮
- Uniform carrying capacity of each drawer: 35kg, built-in compartment, easy to classify items
- With three ball slide rails, drawers can be pulled out of 100%
- Optional conductive foot cups or conductive casters



MV375
高配折边拉手活动柜
High-end crimped handle movable cabinet



MV390-01
高配彩条拉手活动柜
High-end color-bar handle movable cabinet



MV390-02
高配隐形拉手活动柜
High-end stealth handle movable cabinet

技术参数 Technical data

产品编号 Product NO.	NCH23711	NCH23712	NCH23713
产品型号 Product model	MV375	MV390-01	MV390-02
防静电性能 ESD property	1 × 10 ⁵ ~1 × 10 ⁶ Ω		
颜色 Color	灰白色/蓝色 Gray / Blue		
环境温度 Ambient temperature	10~35℃		
环境湿度 Ambient humidity	15~75%		
外形尺寸 Shape size	长L 585 宽W/D 600 高H	390 520 600	390 520 600
应用描述 Application description	工作台标配，用于放置工具、文具等物品 The standard configuration of a workbench for placing tools, stationery, etc.		



防静电工作台附件 ESD accessories of workbench



带冲孔立杆支架（单门型）
Punching upright frame (M type)

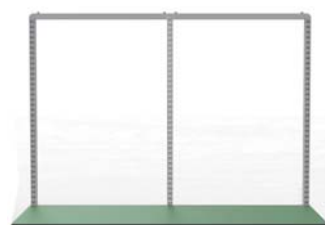


技术参数 Technical data

产品编号 Product NO.	NCC01085	NCC01095	NCC01025	NCC01185	NCC01195	NCC01125	NCC01285	NCC01295	NCC01295
产品型号 Product model	M750*1100	M900*1100	M1200*1100	M750*1359	M900*1359	M1200*1359	M750*1600	M900*1600	M900*1600
防静电性能 ESD property	1 × 10 ⁶ ~1 × 10 ⁹ Ω								
颜色 Color	灰白色/蓝色 Gray / Blue								
环境温度 Ambient temperature	10~35℃								
环境湿度 Ambient humidity	15~75%								
外形尺寸 Shape size	长L	750	900	1200	750	900	1200	750	900
	宽W/D	60	60	60	60	60	60	60	60
	高H	1100	1100	1100	1359	1359	1359	1600	1600
应用描述 Application description	立杆支架为工作台附件配置的基础 The foundation of the punching upright frame configuration for the worktable accessories								

技术参数 Technical data

产品编号 Product NO.	NCC02085	NCC02095	NCC02185	NCC02195	NCC02285	NCC02295
产品型号 Product model	2M750*1100	2M900*1100	2M750*1359	2M900*1359	2M750*1600	2M900*1600
防静电性能 ESD property	1 × 10 ⁶ ~1 × 10 ⁹ Ω					
颜色 Color	灰白色/蓝色 Gray / Blue					
环境温度 Ambient temperature	10~35℃					
环境湿度 Ambient humidity	15~75%					
外形尺寸 Shape size	长L	1500	1800	1500	1800	1500
	宽W/D	60	60	60	60	60
	高H	1100	1100	1359	1359	1600
应用描述 Application description	立杆支架为工作台附件配置的基础 The foundation of the punching upright frame configuration for the worktable accessories					



带冲孔立杆支架（双门型）
Punching upright frame (2M type)

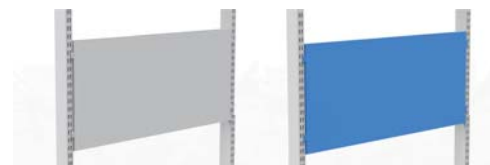


带冲孔立杆支架（三门型）
Punching upright frame (3M type)

技术参数 Technical data

产品编号 Product NO.	NCC03085	NCC03185	NCC03285	
产品型号 Product model	3M750*1100	3M750*1359	3M750*1600	
防静电性能 ESD property	1×10 ⁶ ~1×10 ⁹ Ω			
颜色 Color	灰白色/蓝色 Gray / Blue			
环境温度 Ambient temperature	10~35℃			
环境湿度 Ambient humidity	15~75%			
外形尺寸 Shape size	长L	2250	2250	2250
	宽W/D	60	60	60
	高H	1100	1359	1600
应用描述 Application description	立杆支架为工作台附件配置的基础 The foundation of the punching upright frame configuration for the worktable accessories			

防静电工作台附件 ESD accessories of workbench



方孔上挡板 | Square hole plate

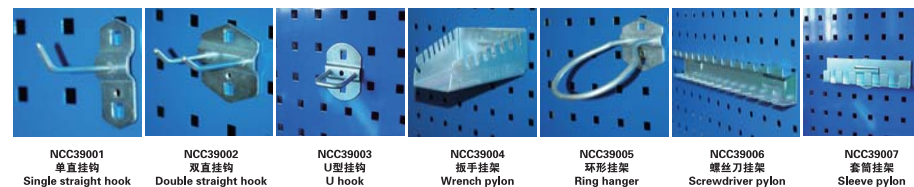
技术参数 Technical data

产品编号 Product NO.	NCC38185	NCC38195	NCC38125	NCC38155
防静电性能 ESD property	1 × 10 ⁶ ~1 × 10 ⁹ Ω			
颜色 Color	灰白色/蓝色 Gray / Blue			
环境温度 Ambient temperature	10~35℃			
环境湿度 Ambient humidity	15~75%			
外形尺寸 Shape size	长L	750	900	1200
	宽W/D	20	20	20
	高H	390	390	390
应用描述 Application description	可放置各类挂钩配件，悬挂各种工具 All kinds of hook fittings can be placed and various tools can be suspended.			

上挡板 | Baffle plate

技术参数 Technical data

产品编号 Product NO.	NCC38085	NCC38095	NCC38025	NCC38055
防静电性能 ESD property	1 × 10 ⁶ ~1 × 10 ⁹ Ω			
颜色 Color	灰白色/蓝色 Gray / Blue			
环境温度 Ambient temperature	10~35℃			
环境湿度 Ambient humidity	15~75%			
外形尺寸 Shape size	长L	750	900	1200
	宽W/D	20	20	20
	高H	390	390	390
应用描述 Application description	作为工艺看板使用，可张贴各类作业指导书 As a craft board, all kinds of instruction books can be posted			



NCC39001 单直挂钩 Single straight hook
NCC39002 双直挂钩 Double straight hook
NCC39003 U型挂钩 U hook
NCC39004 扳手挂架 Wrench pylon
NCC39005 环环挂架 Ring hanger
NCC39006 螺丝刀挂架 Screwdriver pylon
NCC39007 套筒挂架 Sleeve pylon

显示器挂板 | Display plate

技术参数 Technical data

产品编号 Product NO.	NCC38185	NCC38195	NCC38125	NCC38155
防静电性能 ESD property	1 × 10 ⁶ ~1 × 10 ⁹ Ω			
颜色 Color	灰白色/蓝色 Gray / Blue			
环境温度 Ambient temperature	10~35℃			
环境湿度 Ambient humidity	15~75%			
外形尺寸 Shape size	长L	750	900	1200
	宽W/D	20	20	20
	高H	390	390	390
应用描述 Application description	悬挂显示器，可实现智能电子作业指导书 Info: Bigt electronic instruction book can be realized by suspension display			



防静电工作台附件 ESD accessories of workbench



百叶孔上挡板 | Louvered board

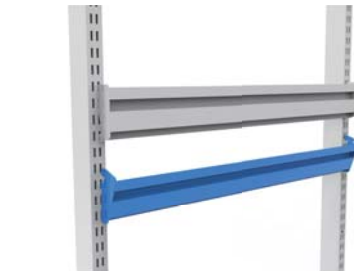
技术参数 Technical data

产品编号 Product NO.	NCC38285	NCC38295	NCC38225	NCC38255
防静电性能 ESD property	1 × 10 ⁶ ~1 × 10 ⁹ Ω			
颜色 Color	灰白色/蓝色 Gray / Blue			
环境温度 Ambient temperature	10~35℃			
环境湿度 Ambient humidity	15~75%			
外形尺寸 Shape size	长L 750	900	1200	1500
宽W/D	20	20	20	20
高H	390	390	390	390
应用描述 Application description	作为工艺看板使用，可张贴各类作业指导书 As a craft board, all kinds of instruction books can be posted			

轻量型悬挂架 | Light weight hanger

技术参数 Technical data

产品型号 Product model	NCC48075	NCC48090	NCC48020	NCC48050
防静电性能 ESD property	1 × 10 ⁶ ~1 × 10 ⁹ Ω			
颜色 Color	灰白色/蓝色 Gray / Blue			
环境温度 Ambient temperature	10~35℃			
环境湿度 Ambient humidity	15~75%			
外形尺寸 Shape size	长L 750	900	1200	1500
宽W/D	50	50	50	50
高H	150	150	150	150
承载能力(kg) Load capacity	30	30	20	20
应用描述 Application description	用于悬挂物料盒 Suspension material box			



防静电注塑料盒 | Anti static injection plastic box

技术参数 Technical data

产品编号 Product NO.	NCZ18121	NCZ18122	NCZ18123
防静电性能 ESD property	< 1 × 10 ⁶ Ω		
颜色 Color	黑色 Black		
环境温度 Ambient temperature	10~35℃		
环境湿度 Ambient humidity	15~75%		
外形尺寸 Shape size	长L 100	135	157
宽W/D	160	200	235
高H	70	90	122
应用描述 Application description	存放电子元件、螺丝紧固件等 Store electronic components, screw fasteners, etc.		



防静电工作台附件 ESD accessories of workbench



钢制搁板 | Steel shelf

技术参数 Technical data

产品编号 Product NO.	NCC18753	NCC18953	NCC18123	NCC18755	NCC18955	NCC18125
防静电性能 ESD property	1 × 10 ⁶ ~1 × 10 ⁹ Ω					
颜色 Color	灰白色/蓝色 Gray / Blue					
环境温度 Ambient temperature	10~35℃					
环境湿度 Ambient humidity	15~75%					
外形尺寸 Shape size	长L 750	900	1200	750	900	1200
宽W/D	50	50	50	50	50	50
高H	300	300	300	400	400	400
承载能力(kg) Load capacity	50	50	30	50	50	30
应用描述 Application description	用于放置资料、仪器、工具等物品，可倾斜20度安装 Used for placing materials, instruments, tools, etc. Can tilt 20° to install					

间隔板 | Divider plate

技术参数 Technical data

产品型号 Product model	NCC20030	NCC21040
防静电性能 ESD property	1 × 10 ⁶ ~1 × 10 ⁹ Ω	
颜色 Color	灰白色/蓝色 Gray / Blue	
环境温度 Ambient temperature	10~35℃	
环境湿度 Ambient humidity	15~75%	
外形尺寸 Shape size	长L 80	80
宽W/D	300	400
高H	200	200
应用描述 Application description	放置在钢制搁板或木制搁板上，用于文档资料分类 Placed on a steel shelf or wooden shelf for classification of document data	



NCC60187/NCC60197



NCC60287/NCC60297

可调节钢制搁板 | Adjustable steel shelf

技术参数 Technical data

产品型号 Product model	NCC60187	NCC60197	NCC60287	NCC60297
防静电性能 ESD property	1 × 10 ⁶ ~1 × 10 ⁹ Ω			
颜色 Color	灰白色/蓝色 Gray / Blue			
环境温度 Ambient temperature	10~35℃			
环境湿度 Ambient humidity	15~75%			
外形尺寸 Shape size	长L 750	900	750	900
宽W/D	650	650	650	650
高H	35	35	35	35
承载能力(kg) Load capacity	100	100	150	150
应用描述 Application description	用于放置资料、仪器、工具等物品，可倾斜0~25度安装 Used for placing materials, instruments, tools, etc. Can tilt 0~25° installation			

防静电钢制品生产过程与工艺

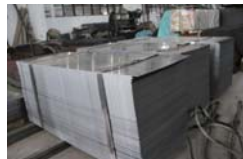
Production process and technology of anti static steel products

优质原材料备料

High quality preparation of raw materials



低碳钢型材
Low carbon steel section bar



冷轧钢板
Cold rolled steel plate



优质冷轧钢卷材
Cold rolled steel rolling material

钣金产品毛坯件加工

Processing of blank parts for sheet metal products



数控冲压加工中心
NC stamping Center



数控激光加工中心
NC laser machining center



大型模具冲压加工中心
Large mold stamping Center



数控折弯加工中心
NC bending machining center



数控折弯加工中心
NC bending machining center



点焊加工中心
Spot welding machining center



氩弧焊
Argon arc welding



氩弧焊
Argon arc welding



表面抛光打磨
Surface polishing and grinding

钣金产品毛坯件

Blank parts of sheet metal products



钣金产品表面涂装

Surface coating of sheet metal products



钢制品包装

Packaging of steel products



钢制品表面颜色

Surface color of steel products



浅灰色 Light Grey
RAL7035



浅蓝色 Light Blue
RAL7008

所有宁楚生产的钢制品
即可拥有三年质量保障

电动升降工作台
Motorized workbench



组合编号 | Combination NO. NCA02301

工作台支撑 | Workbench support
技术参数 Technical data

产品编号 Product NO.	NCA06120	NCA08120	NCA09120	NCA06153	NCA08153	NCA09153	NCA06183	NCA08183	NCA09183
产品型号 Product model	1200 × 600	1200 × 750	1200 × 900	1530 × 600	1530 × 750	1530 × 900	1830 × 600	1830 × 750	1830 × 900
防静电性能 ESD property	1 × 10 ⁵ ~1 × 10 ⁶ Ω								
承载能力 Load capacity	均匀承重, 静载: 300kg; 动载: 200kg Uniform load-bearing, static load: 300kg; dynamic load: 200kg								
环境温度 Ambient temperature	10~35℃								
环境湿度 Ambient humidity	15~75%								
外形尺寸 Shape size (mm)	长L	1200	1200	1200	1530	1530	1530	1830	1830
	宽W/D	600	750	900	600	750	900	600	750
	高H	670~1120	670~1120	670~1120	670~1120	670~1120	670~1120	670~1120	670~1120
应用描述 Application description	选配全进口升降马达, 数字化实时显示高度, 具有记忆键设置功能, 可快速将工作台调整到自定义高度 Select the full import motor, digital real-time display height, with memory key setting function, can quickly adjust the worktable to the custom height								

- 按住向上箭头按钮, 工作台自动升高, 松开按钮工作台停止升高
- 按住向下箭头按钮, 工作台自动下降, 松开按钮工作台停止下降
- 工作台升降到合适位置, 按下“M”按钮再按数字按钮(1或2或3或4)存储自定义高度
- 为延长马达使用寿命, 在按向上或向下箭头按钮时请不要超过3分钟
- Press up the up arrow button, the workbench automatically rises, the release button stops up
- Press down the down arrow button, the workbench automatically drops, the release button stops down
- The worktable is lifted to the right position, and press the “M” button and then press the digital button (1 or 2 or 3 or 4) to store the custom height
- In order to prolong the service life of the motor, do not exceed 3 minutes when pressing the up or down arrow buttons.



组合编号 | Combination NO. NCA02401

配置清单 Configuration list

产品编号 Product NO.	产品名称及尺寸 (mm) Product name and size	数量 Qty
NCD01260	整体防静电灰色台面, 黄榉边, 1200 × 600 × 25 Whole anti-static gray table-top, beech yellow edge, 1200 × 600 × 25	1
NCA68120	电动升降支撑, 1200 × 600 × 670~1120 Motorized support, 1200 × 600 × 670~1120	1
NCH23702	高配双层抽屉, DD375 High-end double drawer, DD375	1
NCC01025	带冲孔立杆支架, M1200 × 1100 Punching upright frame, M1200 × 1359	1
NCC02120	照明灯斜撑支架, M1200 × 400 Light support bracket, M1200 × 400mm	1
NCC03092	钢制LED照明灯, 900 × 20W Steel shell LED light lamp, 900 × 20W	1
NCC38125	方孔上挡板, 灰色, M1200 × 390 Square hole plate, gray, M1200 × 390	1
NCC48020	轻量型悬挂架, M1200 Light weight hanger, M1200	1
NCZ18122	防静电注塑料盒, 中号 Anti-static injection plastic box, medium	5
NCK61201	斜面钢制电源盒, M1200 Slant steel socket box, M1200	1



组合编号 | Combination NO. NCA02402

配置清单 Configuration list

产品编号 Product NO.	产品名称及尺寸 (mm) Product name and size	数量 Qty
NCD01260	整体防静电绿色台面, 黑边, 1200 × 600 × 25 Whole anti-static green table-top, black edge, 1200 × 600 × 25	1
NCA68120	电动升降支撑, 1200 × 600 × 670~1120 Motorized support, 1200 × 600 × 670~1120	1
NCC01195	带冲孔立杆支架, M900 × 1359 Punching upright frame, M900 × 1359	1
NCC02090	照明灯斜撑支架, 900 × 400 Light support bracket, M900 × 400mm	1
NCC03092	钢制LED照明灯, 900 × 20W Steel shell LED light lamp, 900 × 20W	1
NCC48190	承重型悬挂架, M900 Heavy weight hanger, M900	1
NCZ18121	防静电注塑料盒, 小号 Anti-static injection plastic box, small	18
NCZ18122	防静电注塑料盒, 中号 Anti-static injection plastic box, medium	6
NCK69001	斜面钢制电源盒, M900 Slant steel socket box, M900	1



组合编号 | Combination NO. NCA02403

电动升降工作台
Motorized workbench



组合编号 | Combination NO. NCA02501

配置清单 Configuration list

产品编号 Product NO.	产品名称及尺寸 (mm) Product name and size	数量 Qty
NCD01575	整体防静电灰色台面板, 灰边, 1530 × 750 × 25 Whole anti-static gray table-top, gray edge, 1530 × 750 × 25	1
NCA08153	电动升降支撑, 1500 × 750 × 670~1120 Motorized support, 1500 × 750 × 670~1120	1
NCH23702	高配双层抽屉, DD375 High-end double drawer, DD375	1
NCC02185	带冲孔立杆支架, 2M750 × 1359 Punching upright frame, 2M750 × 1359	1
NCC02153	照明灯斜撑支架, M1530 × 400 Light support bracket, M1530 × 400	1
NCC03123	钢制LED照明灯, 1200 × 30W Steel shell LED light lamp, 1200 × 30W	1
NCC38185	方孔上挡板, 蓝色, M750 × 390 Square hole plate, blue, M750 × 390	2
NCC48175	承重型悬挂架, M750 Heavy weight hanger, M750	4
NCZ18122	防静电注塑料盒, 中号 Anti-static injection plastic box, medium	6
NCK67502	斜面钢制电源线盒, 2M750 Slant steel socket box, 2M750	1



组合编号 | Combination NO. NCA02503

配置清单 Configuration list

产品编号 Product NO.	产品名称及尺寸 (mm) Product name and size	数量 Qty
NCD01575	整体防静电灰色台面板, 灰边, 1530 × 750 × 25 Whole anti-static gray table-top, gray edge, 1530 × 750 × 25	1
NCA08153	电动升降支撑, 1500 × 750 × 670~1120 Motorized support, 1500 × 750 × 670~1120	1
NCH23702	高配双层抽屉, DD375 High-end double drawer, DD375	1
NCC02185	带冲孔立杆支架, 2M750 × 1359 Punching upright frame, 2M750 × 1359	1
NCC02153	照明灯斜撑支架, M1530 × 400 Light support bracket, M1530 × 400	1
NCC03123	钢制LED照明灯, 1200 × 30W Steel shell LED light lamp, 1200 × 30W	1
NCC38185	方孔上挡板, 蓝色, M750 × 390 Square hole plate, blue, M750 × 390	2
NCC18753	防静电钢制隔板, M750 × 300 Anti-static steel shelf, M750 × 300	2
NCD01538	防静电木制隔板, 1530 × 380 × 25 Anti-static wooden shelf, gray edge, 1530 × 380 × 25mm	1
NCC48175	承重型悬挂架, M750 Heavy weight hanger, M750	2
NCZ18122	防静电注塑料盒, 中号 Anti-static injection plastic box, medium	6
NCK67502	斜面钢制电源线盒, 2M750 Slant steel socket box, 2M750	1



组合编号 | Combination NO. NCA02502

配置清单 Configuration list

产品编号 Product NO.	产品名称及尺寸 (mm) Product name and size	数量 Qty
NCD01575	整体防静电灰色台面板, 黄梯边, 1530 × 750 × 25 Whole anti-static gray table-top, beech yellow edge, 1530 × 750 × 25	1
NCA08153	电动升降支撑, 1500 × 750 × 670~1120 Motorized support, 1500 × 750 × 670~1120	1
NCH23703	高配三层抽屉, DT375 High-end three drawer, DT375	1
NCC83532	防静电木制脚踏, 500 × 400 Anti-static wood foot tread, 500 × 400	1
NCC57053	落地式主机托架 Landing host computer stand	1
NCC02185	带冲孔立杆支架, 2M750 × 1359 Punching upright frame, 2M750 × 1359	1
NCC02153	照明灯斜撑支架, M1530 × 400 Light support bracket, M1530 × 400	1
NCC03123	钢制LED照明灯, 1200 × 30W Steel shell LED light lamp, 1200 × 30W	1
NCC38185	方孔上挡板, 灰色, M750 × 390 Square hole plate, gray, M750 × 390	1
NCC38085	上挡板, 灰色, M750 × 390 Baffle plate, gray, M750 × 390	1
NCC48175	承重型悬挂架, M750 Heavy weight hanger, M750	2
NCZ18121	防静电注塑料盒, 小号 Anti-static injection plastic box, Small	3
NCK67502	斜面钢制电源线盒, 2M750 Slant steel socket box, 2M750	1

电动升降工作台
Motorized workbench



组合编号 | Combination NO. NCA02601

配置清单 Configuration list

产品编号 Product NO.	产品名称及尺寸 (mm) Product name and size	数量 Qty
NCD01575	整体防静电灰色台面板, 灰边, 1530 × 750 × 25 Whole anti-static gray table-top, gray edge, 1530 × 750 × 25	1
NCA08153	电动升降支撑, 1500 × 750 × 670~1120 Motorized support, 1500 × 750 × 670~1120	1
NCH23702	高配双层抽屉, DD375 High-end double drawer, DD375	1
NCC02185	带冲孔立杆支架, 2M750 × 1359 Punching upright frame, 2M750 × 1359	1
NCC02153	照明灯斜撑支架, M1530 × 400 Light support bracket, M1530 × 400	1
NCC03123	钢制LED照明灯, 1200 × 30W Steel shell LED light lamp, 1200 × 30W	1
NCC38185	方孔上挡板, 蓝色, M750 × 390 Square hole plate, blue, M750 × 390	2
NCD01538	防静电木制隔板, 灰边, 1530 × 380 × 25 Anti-static wooden shelf, gray edge, 1530 × 380 × 25mm	1
NCC48175	承重型悬挂架, M750 Heavy weight hanger, M750	2
NCK67502	斜面钢制电源线盒, 2M750 Slant steel socket box, 2M750	1



组合编号 | Combination NO. NCA02603

配置清单 Configuration list

产品编号 Product NO.	产品名称及尺寸 (mm) Product name and size	数量 Qty
NCD01575	整体防静电灰色台面板, 黄梯边, 1530 × 750 × 25 Whole anti-static gray table-top, beech yellow edge, 1530 × 750 × 25	1
NCA08153	电动升降支撑, 1500 × 750 × 670~1120 Motorized support, 1500 × 750 × 670~1120	1
NCH23703	高配三层抽屉, DT375 High-end three drawer, DT375	1
NCC02185	带冲孔立杆支架, 2M750 × 1359 Punching upright frame, 2M750 × 1359	1
NCC02153	照明灯斜撑支架, M1530 × 400 Light support bracket, M1530 × 400	1
NCC03123	钢制LED照明灯, 1200 × 30W Steel shell LED light lamp, 1200 × 30W	1
NCC38185	方孔上挡板, 灰色, M750 × 390 Square hole plate, gray, M750 × 390	2
NCC18753	防静电钢制隔板, M750 × 300 Anti-static steel shelf, M750 × 300	4
NCK67502	斜面钢制电源线盒, 2M750 Slant steel socket box, 2M750	1



组合编号 | Combination NO. NCA02602

配置清单 Configuration list

产品编号 Product NO.	产品名称及尺寸 (mm) Product name and size	数量 Qty
NCD01575	整体防静电灰色台面板, 灰边, 1530 × 750 × 25 Whole anti-static gray table-top, gray edge, 1530 × 750 × 25	1
NCA08153	电动升降支撑, 1500 × 750 × 670~1120 Motorized support, 1500 × 750 × 670~1120	1
NCC70885	塑料键盘架, 560 × 260 Plastic keyboard stands, 560 × 260	1
NCC57053	落地式主机托架 Landing host computer stand	1
NCC02185	带冲孔立杆支架, 2M750 × 1359 Punching upright frame, 2M750 × 1359	1
NCC02153	照明灯斜撑支架, M1530 × 400 Light support bracket, M1530 × 400	1
NCC03123	钢制LED照明灯, 1200 × 30W Steel shell LED light lamp, 1200 × 30W	1
NCC38185	方孔上挡板, 灰色, M750 × 390 Square hole plate, gray, M750 × 390	2
NCC57201	显示器拐臂挂架 Display rack	1
NCC48175	承重型悬挂架, M750 Heavy weight hanger, M750	4
NCZ18122	防静电注塑料盒, 中号 Anti-static injection plastic box, medium	6

标准可调式工作台
Standard adjustable workbench



组合编号 | Combination NO. NCA02701



技术参数 Technical data

产品编号 Product NO.	NCA16120	NCA18120	NCA19120	NCA16153	NCA18153	NCA19153	NCA16183	NCA18183	NCA19183	NCA16228	NCA18228	NCA19228
产品型号 Product model	1200*600	1200*750	1200*900	1530*600	1530*750	1530*900	1830*600	1830*750	1830*900	2280*600	2280*750	2280*900
防静电性能 ESD property	1 × 10 ⁹ ~1 × 10 ¹⁰ Ω											
承载能力 Load capacity	均匀载重: 500kg Uniform load: 500kg											
环境温度 Ambient temperature	10~35℃											
环境湿度 Ambient humidity	15~75%											
外形尺寸 Shape size (mm)	长L	1200	1200	1200	1530	1530	1530	1830	1830	1830	2280	2280
	宽W/D	600	750	900	600	750	900	600	750	900	600	750
高H	670~1120	670~1120	670~1120	670~1120	670~1120	670~1120	670~1120	670~1120	670~1120	670~1120	670~1120	670~1120
	高H	670~1120	670~1120	670~1120	670~1120	670~1120	670~1120	670~1120	670~1120	670~1120	670~1120	670~1120
应用描述 Application description	整体防静电工作台必选, 实现整体防静电性能, 静电释放更安全更实用 The anti-static table required to achieve the overall antistatic performance, ESD is safer and more practical.											



标准可调式工作台
Standard adjustable workbench



组合编号 | Combination NO. NCA02801

配置清单 Configuration list

产品编号 Product NO.	产品名称及尺寸 (mm) Product name and size	数量 Qty
NCD01575	整体防静电灰色台面, 黄榉边, 1530 × 750 × 25 Whole anti-static gray table-top, beech yellow edge, 1530 × 750 × 25	1
NCA18153	标准可调式工作台支撑, 1500 × 750 × 670~1120 Standard adjustable workbench support, 1500 × 750 × 670~1120	1
NCH23702	高配双层抽屉, DD375 High-end double drawer, DD375	1
NCC02185	带冲孔立柱支架, 2M750 × 1359 Punching upright frame, 2M750 × 1359	1
NCC02153	照明灯斜撑支架, M1530 × 400 Light support bracket, M1530 × 400	1
NCC03123	钢制LED照明灯, 1200 × 30W Steel shell LED light lamp, 1200 × 30W	1
NCD01538	防静电木制搁板, 黄榉边, 1530 × 380 × 25 Anti-static wooden shelf, beech yellow edge, 1530 × 380 × 25mm	1
NCC38185	方孔上挡板, 灰色, M750 × 390 Square hole plate, gray, M750 × 390	1
NCC18753	防静电钢制搁板, M750 × 300 Anti-static steel shelf, M750 × 300	2
NCC48175	承重型悬挂架, M750 Heavy weight hanger, M750	2
NCZ18122	防静电注塑料盒, 中号 Anti-static injection plastic box, medium	3
NCK67502	斜面钢制电源线盒, 2M750 Slant steel socket box, 2M750	1



组合编号 | Combination NO. NCA02802

配置清单 Configuration list

产品编号 Product NO.	产品名称及尺寸 (mm) Product name and size	数量 Qty
NCD01260	整体防静电灰色台面, 黄榉边, 1200 × 600 × 25 Whole anti-static gray table-top, beech yellow edge, 1200 × 600 × 25	1
NCA18120	标准可调式工作台支撑, 1200 × 750 × 670~1120 Standard adjustable workbench support, 1200 × 750 × 670~1120	1
NCH23702	高配双层抽屉, DD375 High-end double drawer, DD375	1
NCC01025	带冲孔立柱支架, M1200 × 1100 Punching upright frame, M1200 × 1359	1
NCC02120	照明灯斜撑支架, M1200 × 400 Light support bracket, M1200 × 400mm	1
NCC03092	钢制LED照明灯, 900 × 20W Steel shell LED light lamp, 900 × 20W	1
NCC38125	方孔上挡板, 蓝色, M1200 × 390 Square hole plate, blue, M1200 × 390	1
NCC48020	轻量型悬挂架, M1200 Light weight hanger, M1200	1
NCZ18122	防静电注塑料盒, 中号 Anti-static injection plastic box, medium	5
NCK61201	斜面钢制电源线盒, M1200 Slant steel socket box, M1200	1

组合编号 | Combination NO. NCA02803



标准可调式工作台
Standard adjustable workbench



组合编号 | Combination NO. NCA02901

配置清单 Configuration list

产品编号 Product NO.	产品名称及尺寸 (mm) Product name and size	数量 Qty
NCD01575	整体防静电灰色台面板, 黄梯边, 1530 × 750 × 25 Whole anti-static gray table-top, beech yellow edge, 1530 × 750 × 25	1
NCA18153	标准可调式工作台支撑, 1500 × 750 × 670~1120 Standard adjustable workbench support, 1500 × 750 × 670~1120	1
NCH23702	高配双层抽屉, DD375 High-end double drawer, DD375	1
NCC01285	带冲孔立杆支架, M750 × 1600 Punching upright frame, M750 × 1600	1
NCC02075	照明灯斜撑支架, M750 × 400 Light support bracket, M750 × 400	1
NCC03123	钢制LED照明灯, 1200 × 30W Steel shell LED light lamp, 1200 × 30W	1
NCC38185	方孔上挡板, 灰色, M750 × 390 Square hole plate, gray, M750 × 390	1
NCC18753	防静电钢制搁板, M750 × 300 Anti-static steel shelf, M750 × 300	2
NCD48175	承重型悬挂架, M750 Heavy weight hanger, M750	1
NCZ18122	防静电注塑料盒, 中号 Anti-static injection plastic box, medium	2
NCK67501	斜面钢制电源线盒, M750 Slant steel socket box, M750	1



组合编号 | Combination NO. NCA02903

配置清单 Configuration list

产品编号 Product NO.	产品名称及尺寸 (mm) Product name and size	数量 Qty
NCD01575	整体防静电灰色台面板, 灰边, 1530 × 750 × 25 Whole anti-static gray table-top, gray edge, 1530 × 750 × 25	1
NCA18153	标准可调式工作台支撑, 1500 × 750 × 670~1120 Standard adjustable workbench support, 1500 × 750 × 670~1120	1
NCH23702	高配双层抽屉, DD375 High-end double drawer, DD375	1
NCC02185	带冲孔立杆支架, 2M750 × 1359 Punching upright frame, 2M750 × 1359	1
NCD38185	方孔上挡板, 灰色, M750 × 390 Square hole plate, gray, M750 × 390	2
NCD01538	防静电木制搁板, 灰边, 1530 × 380 × 25 Anti-static wooden shelf, gray edge, 1530 × 380 × 25mm	1



组合编号 | Combination NO. NCA02902

配置清单 Configuration list

产品编号 Product NO.	产品名称及尺寸 (mm) Product name and size	数量 Qty
NCD01575	整体防静电灰色台面板, 黄梯边, 1530 × 750 × 25 Whole anti-static gray table-top, beech yellow edge, 1530 × 750 × 25	2
NCA18153	标准可调式工作台支撑, 1500 × 750 × 670~1120 Standard adjustable workbench support, 1500 × 750 × 670~1120	2
NCH23711	高配折边拉手活动柜, MV375 High-end crimped handle movable cabinet, MV375	2
NCC02185	带冲孔立杆支架, 2M750 × 1359 Punching upright frame, 2M750 × 1359	1
NCD01580	防静电木制搁板, 黄梯边, M1530 × 800 Anti-static wooden shelf, beech yellow edge, 1530 × 380 × 25mm	1
NCC03123	钢制LED照明灯, 1200 × 30W Steel shell LED light lamp, 1200 × 30W	2
NCK67503	双面斜面钢制电源线盒, 2M750 Double face slant steel socket box, 2M750	1

标准可调式工作台
Standard adjustable workbench



组合编号 | Combination NO. NCA03001

配置清单 Configuration list

产品编号 Product NO.	产品名称及尺寸 (mm) Product name and size	数量 Qty
NCD01875	整体防静电灰色台面板, 灰边, 1830 × 750 × 25 Whole anti-static gray table-top, gray edge, 1830 × 750 × 25	1
NCA18183	标准可调式工作台支撑, 1800 × 750 × 670~1120 Standard adjustable workbench support, 1800 × 750 × 670~1120	1
NCH23702	高配双层抽屉, DD375 High-end double drawer, DD375	1
NCC02195	带冲孔立杆支架, 2M900 × 1359 Punching upright frame, 2M900 × 1359	1
NCC02183	照明灯斜撑支架, M1830 × 400 Light support bracket, M1830 × 400	1
NCC03123	钢制LED照明灯, 1200 × 30W Steel shell LED light lamp, 1200 × 30W	1
NCC38295	百叶孔上挡板, 灰色, M900 × 390 Louvered plate, gray, M900 × 390	1
NCC38195	方孔上挡板, 灰色, M900 × 390 Square hole plate, gray, M900 × 390	1
NCC60197	可调节钢制搁板, M900 × 650 Adjustable steel shelf, M900 × 650	2
NCK69002	斜面钢制电源线盒, 2M900 Slant steel socket box, 2M900	1



组合编号 | Combination NO. NCA03002

配置清单 Configuration list

产品编号 Product NO.	产品名称及尺寸 (mm) Product name and size	数量 Qty
NCD01875	整体防静电灰色台面板, 黄梯边, 1830 × 750 × 25 Whole anti-static gray table-top, beech yellow edge, 1830 × 750 × 25	1
NCA18183	防静电可调式工作台支撑, 1800 × 750 × 670~1120 Standard adjustable workbench support, 1800 × 750 × 670~1120	1
NCH23702	高配双层抽屉, DD375 High-end double drawer, DD375	1
NCC02195	带冲孔立杆支架, 2M900 × 1359 Punching upright frame, 2M900 × 1359	1
NCC02183	照明灯斜撑支架, M1830 × 400 Light support bracket, M1830 × 400	1
NCC03123	钢制LED照明灯, 1200 × 30W Steel shell LED light lamp, 1200 × 30W	1
NCc38095	上挡板, 灰色, M900 × 390 Baffle plate, gray, M900 × 390	1
NCC38195	方孔上挡板, 灰色, M900 × 390 Square hole plate, gray, M900 × 390	1
NCC18953	钢制搁板, M900 × 300 Steel shelf, M900 × 300	3
NCK69002	斜面钢制电源线盒, 2M900 Slant steel socket box, 2M900	1

标准固定式工作台
Standard fixed workbench



组合编号 | Combination NO. NCA03101

技术参数 Technical data

产品编号 Product NO.	NCA26120	NCA28120	NC29120	NCA26153	NCA28153	NCA29153	NCA26183	NCA28183	NCA29183	NCA26228	NCA28228	NCA29228
产品型号 Product model	1200*600	1200*750	1200*900	1530*600	1530*750	1530*900	1830*600	1830*750	1830*900	2280*600	2280*750	2280*900
防静电性能 ESD property	1 × 10 ⁶ ~1 × 10 ⁹ Ω											
承载能力 Load capacity	均匀载重: 500kg Uniform load: 500kg											
环境温度 Ambient temperature	10~35℃											
环境湿度 Ambient humidity	15~75%											
外形尺寸 Shape size (mm)	长L 600 宽W/D 750 高H 760	1200 750 760	1200 900 760	1530 600 760	1530 750 760	1530 900 760	1830 600 760	1830 750 760	1830 900 760	2280 600 760	2280 750 760	2280 900 760
应用描述 Application description	整体防静电工作台必选，实现整体防静电性能，静电释放更安全更实用 The anti-static table required to achieve the overall antistatic performance, ESD is safer and more practical.											



标准固定式工作台
Standard fixed workbench



组合编号 | Combination NO. NCA03201

配置清单 Configuration list

产品编号 Product NO.	产品名称及尺寸 (mm) Product name and size	数量 Qty
NCD01875	整体防静电灰色台面，黄梯边，1830 × 750 × 25 Whole anti-static gray table-top, beech yellow edge, 1830 x 750 x 25	2
NCA28183	标准可调式工作台支撑，1800 × 750 × 760 Standard adjustable workbench support, 1800 x 750 x 760	2
NCH23702	高配双层抽屉，DD375 High-end double drawer, DD375	2
NCC02195	带冲孔立杆支架，2M900 × 1359 Punching upright frame, 2M900 x 1359	1
NCD01850	防静电木制隔板，黄梯边，1830 × 500 × 25 Anti-static wooden shelf, beech yellow edge, 1830 x 500 x 25mm	1
NCC38195	方孔上挡板，灰色，M900 × 390 Square hole plate, gray, M900 x 390	4
NCC48090	轻量型悬挂架，M900 Light weight hanger, M750	4



组合编号 | Combination NO. NCA03202

配置清单 Configuration list

产品编号 Product NO.	产品名称及尺寸 (mm) Product name and size	数量 Qty
NCD01575	整体防静电灰色台面，灰边，1530 × 750 × 25 Whole anti-static gray table-top, gray edge, 1530 x 750 x 25	1
NCA28153	标准固定式工作台支撑，1500 × 750 × 760 Standard fixed workbench support, 1500 x 750 x 760	1
NCH23702	高配双层抽屉，DD375 High-end double drawer, DD375	1
NCC01185	带冲孔立杆支架，2M750 × 1359 Punching upright frame, M750 x 1359	1
NCC02075	防静电木制隔板，灰边，1530 × 400 Light support bracket, M750 x 400	1
NCC03902	钢制LED照明灯，900 × 20W Steel shell LED light lamp, 900 x 20W	1
NCC38085	上挡板，M750 × 380 Baffle plate, M750 x 380	2
NCC18753	防静电钢制隔板，M750 × 300 Anti-static steel shelf, M750 x 300	2
NCC48075	轻量型悬挂架，M750 Light weight hanger, M750	4
NCZ18121	防静电注塑料盒，小号 Anti-static injection plastic box, small	8
NCK67502	斜面钢制电源插座，2M750 Slant steel socket box, 2M750	1



组合编号 | Combination NO. NCA03203

标准固定式工作台
Standard fixed workbench

组合编号 | Combination NO. NCA03301

配置清单 Configuration list

产品编号 Product NO.	产品名称及尺寸 (mm) Product name and size	数量 Qty
NCD01275	整体防静电灰色台面, 黄棒边, 1200 × 750 × 25 Whole anti-static gray table-top, beech yellow edge, 1200 × 750 × 25	1
NCA28120	标准固定式工作台支撑, 1200 × 750 × 760 Standard fixed workbench support, 1200 × 750 × 760	1
NCH23702	高配双层抽屉, DD375 High-end double drawer, DD375	1
NCC01185	带冲孔立杆支架, M750 × 1359 Punching upright frame, M750 × 1359	1
NCC02075	照明灯斜撑支架, M750 × 400 Light support bracket, M750 × 400	1
NCC03902	钢制LED照明灯, 900 × 20W Steel shell LED light lamp, 900 × 20W	1
NCC38185	方孔上挡板, 灰色, M750 × 390 Square hole plate, gray, M750 × 390	1
NCC48075	轻量型悬挂架, M750 Light weight hanger, M750	3
NCZ18122	防静电注塑料盒, 中号 Anti-static injection plastic box, medium	18
NCK67501	斜面钢制电源插座, M750 Slant steel socket box, M750	1



组合编号 | Combination NO. NCA03302

标准固定式工作台
Standard fixed workbench

组合编号 | Combination NO. NCA03401

配置清单 Configuration list

产品编号 Product NO.	产品名称及尺寸 (mm) Product name and size	数量 Qty
NCD02275	整体防静电灰色台面, 灰边, 2280 × 750 × 25 Whole anti-static gray table-top, green edge, 2280 × 750 × 25	1
NCA28228	标准固定式工作台支撑, 2280 × 750 × 760 Standard fixed workbench support, 2280 × 750 × 760	1
NCH23703	高配三层抽屉, DT375 High-end three drawer, DT375	1
NCC70885	塑料键盘架, 560 × 260 Plastic keyboard stands, 560 × 260	1
NCC02185	带冲孔立杆支架, 2M750 × 1359 Punching upright frame, 2M750 × 1359	1
NCC02153	照明灯斜撑支架, M1530 × 400 Light support bracket, M1530 × 400	1
NCC03123	钢制LED照明灯, 1200 × 30W Steel shell LED light lamp, 1200 × 30W	1
NCC38085	上挡板, M750 × 390 Baffle plate, M750 × 390	1
NCC38185	方孔上挡板, 灰色, M750 × 390 Square hole plate, gray, M750 × 390	1
NCC18753	防静电钢制隔板, M750 × 300 Anti-static steel shelf, M750 × 300	2
NCC48075	轻量型悬挂架, M750 Light weight hanger, M750	2
NCZ18122	防静电注塑料盒, 中号 Anti-static injection plastic box, medium	6
NCK67502	斜面钢制电源插座, 2M750 Slant steel socket box, 2M750	1



组合编号 | Combination NO. NCA03402



轻型工作台
Light-duty workbench



组合编号 | Combination NO. NCA03501

技术参数 Technical data

产品编号 Product NO.	NCA36120	NCA38120	NC39120	NCA36153	NCA38153	NCA39153	NCA36183	NCA38183	NCA39183	NCA36228	NCA38228	NCA39228
产品型号 Product model	1200*600	1200*750	1200*900	1530*600	1530*750	1530*900	1830*600	1830*750	1830*900	2280*600	2280*750	2280*900
防静电性能 ESD property	1 × 10 ⁶ ~1 × 10 ⁹ Ω											
承载能力 Load capacity	均匀载重: 500kg Uniform load: 500kg											
环境温度 Ambient temperature	10~35℃											
环境湿度 Ambient humidity	15~75%											
外形尺寸 Shape size (mm)	长L 600 宽W/D 760 高H 760	1200 750 760	1200 900 760	1530 600 760	1530 750 760	1530 900 760	1830 600 760	1830 750 760	1830 900 760	2280 600 760	2280 750 760	2280 900 760
应用描述 Application description	整体防静电工作台台必须, 实现整体防静电性能, 静电释放更安全更实用。 The anti-static table required to achieve the overall antistatic performance. ESD is safer and more practical.											



轻型工作台
Light-duty workbench



组合编号 | Combination NO. NCA03601

配置清单 Configuration list

产品编号 Product NO.	产品名称及尺寸 (mm) Product name and size	数量 Qty
NCD51575	整体防静电绿色台面板, 黑边, 1530 × 750 × 25 Whole anti-static green table-top, black edge, 1530 × 750 × 25	1
NCA38153	轻型工作台支撑, 1500 × 750 × 760 Light-duty workbench support, 1500 × 750 × 760	1
NCH23711	高配折边拉手活动柜, MV375 High-end crimped handle movable cabinet, MV375	1
NCC70885	塑料键盘架, 560 × 260 Plastic keyboard stands, 560 × 260	1
NCC57053	落地式主机托架 Landing host computer stand	1
NCC02185	带冲孔立柱支架, 2M750 × 1359 Punching upright frame, 2M750 × 1359	1
NCC02153	照明灯斜撑支架, M1530 × 400 Light support bracket, M1530 × 400	1
NCC03123	钢制LED照明灯, 1200 × 30W Steel shel LED light lamp, 1200 × 30W	1
NCC38085	上挡板, M750 × 390 Baffle plate, M750 × 390	1
NCC18753	防静电钢制搁板, M750 × 300 Anti-static steel shelf, M750 × 300	2
NCC48175	承重型悬挂架, M750 Heavy weight hanger, M750	4
NCC18122	防静电注塑料盒, 中号 Anti-static injection plastic box, medium	12
NCK67502	斜面钢制电源线盒, 2M750 Slant steel socket box, 2M750	1

配置清单 Configuration list

产品编号 Product NO.	产品名称及尺寸 (mm) Product name and size	数量 Qty
NCD01575	整体防静电灰色台面板, 黄梯边, 1530 × 750 × 25 Whole anti-static gray table-top, beech yellow edge, 1530 × 750 × 25	1
NCA18153	轻型工作台支撑, 1500 × 750 × 760-1120 Light-duty workbench support, 1500 × 750 × 760-1120	1
NCH23702	高配双层抽屉, DD375 High-end double drawer, DD375	1
NCC02085	带冲孔立柱支架, 2M750 × 1100 Punching upright frame, 2M750 × 1100	1
NCC02153	照明灯斜撑支架, M1530 × 400 Light support bracket, M1530 × 400	1
NCC38085	上挡板, 灰色, M750 × 390 Baffle plate, gray, M750 × 390	1
NCC18753	防静电钢制搁板, M750 × 300 Anti-static steel shelf, M750 × 300	2
NCC48175	承重型悬挂架, M750 Heavy weight hanger, M750	3
NCC18122	防静电注塑料盒, 中号 Anti-static injection plastic box, medium	3



组合编号 | Combination NO. NCA03602



轻型工作台
Light-duty workbench



组合编号 | Combination NO. NCA03701

配置清单 Configuration list

产品编号 Product NO.	产品名称及尺寸 (mm) Product name and size	数量 Qty
NCD01575	整体防静电灰色台面, 黄梯边, 1530 × 750 × 25 Whole anti-static gray table-top, beech yellow edge, 1530 × 750 × 25	1
NCA38153	轻型工作台支撑, 1500 × 750 × 760 Light-duty workbench support, 1500 × 750 × 760	1
NCC02185	带冲孔立杆支架, 2M750 × 1359 Punching upright frame, 2M750 × 1359	1
NCC02153	照明灯斜撑支架, 1530 × 400 Light support bracket, M1530 × 400	1
NCC03123	钢制LED照明灯, 1200 × 30W Steel shell LED light lamp, 1200 × 30W	1
NCC38085	上挡板, M750 × 390 Baffle plate, M750 × 390	2
NCC18753	防静电钢制搁板, M750 × 300 Anti-static steel shelf, M750 × 300	2
NCC48075	轻量型悬挂架, M750 Light weight hanger, M750	1
NCZ18121	防静电注塑料盒, 小号 Anti-static plastic box, small	4
NCK67502	斜面钢制电源线盒, 2M750 Slant steel socket box, 2M750	1



组合编号 | Combination NO. NCA03702



轻型工作台
Light-duty workbench



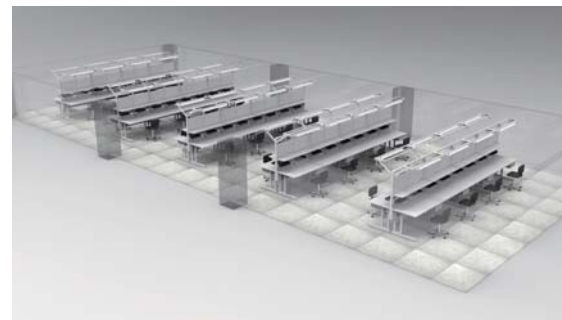
组合编号 | Combination NO. NCA03801

配置清单 Configuration list

产品编号 Product NO.	产品名称及尺寸 (mm) Product name and size	数量 Qty
NCD01575	整体防静电灰色台面, 灰边, 1530 × 750 × 25 Whole anti-static gray table-top, gray edge, 1530 × 750 × 25	2
NCA38153	轻型工作台支撑, 1500 × 750 × 760 Light-duty workbench support, 1500 × 750 × 760	2
NCH23702	高配双层抽屉, DD375 High-end double drawer, DD375	2
NCC02185	带冲孔立杆支架, 2M750 × 1359 Punching upright frame, 2M750 × 1359	1
NCC02153	照明灯斜撑支架, 1530 × 400 Light support bracket, M1530 × 400	2
NCC03123	钢制LED照明灯, 1200 × 30W Steel shell LED light lamp, 1200 × 30W	2
NCC38185	方孔上挡板, M750 × 390 Square hole plate, M750 × 390	4
NCC18753	防静电钢制搁板, M750 × 300 Anti-static steel shelf, M750 × 300	2
NCK67503	双面斜面钢制电源线盒, 2M750 Double flange slant steel socket box, 2M750	1



组合编号 | Combination NO. NCA03802



配置清单 Configuration list

产品编号 Product NO.	产品名称及尺寸 (mm) Product name and size	数量 Qty
NCD01875	整体防静电灰色台面, 黄梯边, 1830 × 750 × 25 Whole anti-static green table-top, beech yellow edge, 1830 × 750 × 25	1
NCA38183	轻型工作台支撑, 1800 × 750 × 760 Light-duty workbench support, 1800 × 750 × 760	1
NCH23711	高配折边拉手活动柜, MV375 High-end crimped handle movable cabinet, MV375	2
NCC02195	带冲孔立杆支架, 2M900 × 1359 Punching upright frame, 2M900 × 1359	1
NCC02183	照明灯斜撑支架, 1830 × 400 Light support bracket, M1830 × 400	1
NCC03123	钢制LED照明灯, 1200 × 30W Steel shell LED light lamp, 1200 × 30W	1
NCC38085	上挡板, 蓝色, M900 × 390 Baffle plate, blue, M900 × 390	2
NCC48190	承重型悬挂架, M900 Heavy weight hanger, M900	4
NCZ18121	防静电注塑料盒, 小号 Anti-static plastic box, small	12
NCC18953	防静电钢制搁板, M900 × 300 Anti-static steel shelf, M900 × 300	1
NCK69002	斜面钢制电源线盒, 2M900 Slant steel socket box, 2M900	1

中型方管工作台

Medium-duty square tube workbench



组合编号 | Combination NO. NCA03901

技术参数 Technical data

产品编号 Product NO.	NCA56120	NCA58120	NC59120	NCA56153	NCA58153	NCA59153	NCA56183	NCA58183	NCA59183	NCA56228	NCA58228	NCA59228
产品型号 Product model	1200*600	1200*750	1200*900	1530*600	1530*750	1530*900	1830*600	1830*750	1830*900	2280*600	2280*750	2280*900
防静电性能 ESD property	1 × 10 ⁶ ~1 × 10 ⁹ Ω											
承载能力 Load capacity	均匀载重: 500kg Uniform load: 500kg											
环境温度 Ambient temperature	10~35℃											
环境湿度 Ambient humidity	15~75%											
外形尺寸 Shape size (mm)	长L 1200 宽W/D 600 高H 760	1200 750 760	1200 900 760	1530 600 760	1530 750 760	1530 900 760	1830 600 760	1830 750 760	1830 900 760	2280 600 760	2280 750 760	2280 900 760
应用描述 Application description	整体防静电工作台必备, 实现整体防静电性能, 静电释放更安全更实用 The anti-static table required to achieve the overall antistatic performance, ESD is safer and more practical.											



中型方管工作台

Medium-duty square tube workbench



组合编号 | Combination NO. NCA04001

配置清单 Configuration list

产品编号 Product NO.	产品名称及尺寸 (mm) Product name and size	数量 Qty
NCD01575	整体防静电绿色台面, 黑边, 1530 × 750 × 25 Whole anti-static green table-top, black edge, 1530 × 750 × 25	1
NCA58153	中型方管工作台支撑, 1500 × 750 × 760 Standard adjustable workbench support, 1500 × 750 × 760	1
NCH23702	高配双层抽屉, DD375 High-end double drawer, DD375	1
NCC02085	带冲孔立杆支架, 2M750 × 1100 Punching upright frame, 2M750 × 1100	1
NCC02095	照明灯斜撑支架, M1530 × 400 Light support bracket, M1530 × 400	1
NCC03123	钢制LED照明灯, 1200 × 30W Steel shell LED light lamp, 1200 × 30W	1
NCC38185	方孔上挡板, 灰色, M750 × 390 Square hole plate, gray, M750 × 390	1
NCC38085	上挡板, 灰色, M750 × 390 Baffle plate, gray, M750 × 390	1
NCK67502	斜置钢制电源线盒, 2M750 Slant steel socket box, 2M750	1



组合编号 | Combination NO. NCA04002



组合编号 | Combination NO. NCA04003

配置清单 Configuration list

产品编号 Product NO.	产品名称及尺寸 (mm) Product name and size	数量 Qty
NCD01575	整体防静电灰色台面, 灰边, 1530 × 750 × 25 Whole anti-static gray table-top, gray edge, 1530 × 750 × 25	1
NCA58153	中型方管工作台支撑, 1500 × 750 × 760 Standard adjustable workbench support, 1500 × 750 × 760	1
NCC02085	带冲孔立杆支架, 2M750 × 1100 Punching upright frame, 2M750 × 1100	1
NCC02095	照明灯斜撑支架, M1530 × 400 Light support bracket, M1530 × 400	1
NCC03123	钢制LED照明灯, 1200 × 30W Steel shell LED light lamp, 1200 × 30W	1
NCC38185	方孔上挡板, 灰色, M750 × 390 Square hole plate, gray, M750 × 390	1
NCC38185	防静电钢制隔板, M750 × 300 Anti-static steel shelf, M750 × 300	1
NCK67502	斜置钢制电源线盒, 2M750 Slant steel socket box, 2M750	1

中型方管工作台 Medium-duty square tube workbench



组合编号 | Combination NO. NCA04101

配置清单 Configuration list

产品编号 Product NO.	产品名称及尺寸 (mm) Product name and size	数量 Qty
NCD01575	整体防静电灰色台面板, 黄绿边, 1530 × 750 × 25 Whole anti-static gray table-top, gray yellow edge, 1530 × 750 × 25	1
NCA58153	中型方管工作台支撑, 1500 × 750 × 760 Standard adjustable workbench support, 1500 × 750 × 760	1
NCH23702	高配双层抽屉, DD375 High-end double drawer, DD375	1
NCC01025	带冲孔立杆支架, M750 × 1100 Punching upright frame, M750 × 1100	1
NCC02085	照明灯斜撑支架, M1200 × 400 Light support bracket, M1200 × 400	1
NCC03092	钢制LED照明灯, 900 × 20W Steel shell LED light lamp, 900 × 20W	1
NCC38185	方孔上挡板, 灰色, M750 × 390 Square hole plate, gray, M750 × 390	1
NCC48175	承重型悬挂架, M750 Heavy weight hanger, M750	1
NCK67501	斜面钢制电源线盒, M750 Slant steel socket box, M750	1



组合编号 | Combination NO. NCA04103

配置清单 Configuration list

产品编号 Product NO.	产品名称及尺寸 (mm) Product name and size	数量 Qty
NCD01575	整体防静电灰色台面板, 灰边, 1530 × 750 × 25 Whole anti-static gray table-top, gray edge, 1530 × 750 × 25	1
NCA58153	中型方管工作台支撑, 1500 × 750 × 760 Standard adjustable workbench support, 1500 × 750 × 760	1
NCC70885	塑料键盘架, 560 × 260 Plastic keyboard stand, 560 × 260	1
NCC57053	落地式主机托架 Landing host computer stand	1
NCC02085	带冲孔立杆支架, 2M750 × 1100 Punching upright frame, 2M750 × 1100	1
NCC02095	照明灯斜撑支架, M1530 × 400 Light support bracket, M1530 × 400	1
NCC03123	钢制LED照明灯, 1200 × 30W Steel shell LED light lamp, 1200 × 30W	1
NCC38185	百叶孔上挡板, 蓝色, M750 × 390 Louvered plate, blue, M750 × 390	1
NCC38185	方孔上挡板, 灰色, M750 × 390 Square hole plate, gray, M750 × 390	1
NCC48175	承重型悬挂架, M750 Heavy weight hanger, M750	2
NCZ18122	防静电注塑料盒, 中号 Anti-static injection plastic box, medium	8
NCK67505	斜面钢制电源线盒, 2M750+M750 Slant steel socket box, 2M750+M750	1



组合编号 | Combination NO. NCA04102

配置清单 Configuration list

产品编号 Product NO.	产品名称及尺寸 (mm) Product name and size	数量 Qty
NCD01875	整体防静电灰色台面板, 灰边, 1830 × 750 × 25 Whole anti-static gray table-top, gray edge, 1830 × 750 × 25	2
NCA58183	中型方管工作台支撑, 1800 × 750 × 760 Standard adjustable workbench support, 1800 × 750 × 760	2
NCH23711	高配折边拉手活动柜, MV375 High-end crimped handle movable cabinet, MV375	2
NCC00095	带冲孔立杆支架, M750 × 870 Punching upright frame, M750 × 870	1
NCD01838	防静电木制搁板, 灰边, 1830 × 380 × 25mm Anti-static wooden shelf, gray edge, 1830 × 380 × 25mm	2
NCK69002	双面斜面钢制电源线盒, 2M900 Double face slant steel socket box, 2M900	1

中型方管工作台 Medium-duty square tube workbench



组合编号 | Combination NO. NCA04201

配置清单 Configuration list

产品编号 Product NO.	产品名称及尺寸 (mm) Product name and size	数量 Qty
NCD02275	整体防静电灰色台面板, 黄绿边, 2280 × 750 × 25 Whole anti-static gray table-top, beech yellow edge, 2280 × 750 × 25	1
NCA58223	中型方管工作台支撑, 2250 × 750 × 760 Standard adjustable workbench support, 2250 × 750 × 760	1
NCH23711	高配折边拉手活动柜, MV375 High-end crimped handle movable cabinet, MV375	1
NCH23703	高配三层抽屉, DT375 High-end three drawer, DT375	1
NCC03185	带冲孔立杆支架, 3M750 × 1359 Punching upright frame, 3M750 × 1359	1
NCC02095	照明灯斜撑支架, M1530 × 400 Light support bracket, M1530 × 400	1
NCC18903	防静电钢制搁板, M750 × 300 Anti-static steel shelf, M750 × 300	3
NCC38185	百叶孔上挡板, 蓝色, M750 × 390 Louvered plate, blue, M750 × 390	1
NCC38185	上挡板, 灰色, M750 × 390 Baffle plate, gray, M750 × 390	1
NCC48175	轻量型悬挂架, M750 Light weight hanger, M750	4
NCZ18122	防静电注塑料盒, 中号 Anti-static injection plastic box, medium	5
NCK67506	斜面钢制电源线盒, 3M750 Slant steel socket box, 3M750	1



配置清单 Configuration list

产品编号 Product NO.	产品名称及尺寸 (mm) Product name and size	数量 Qty
NCD51875	整体防静电绿色台面板, 黑边, 1830 × 750 × 25 Whole anti-static green table-top, black edge, 1830 × 750 × 25	1
NCA18183	标准可调式工作台支撑, 1800 × 750 × 760 Standard adjustable workbench support, 1800 × 750 × 760	1
NCH23711	高配折边拉手活动柜, MV375 High-end crimped handle movable cabinet, MV375	1
NCC70885	塑料键盘架, 560 × 260 Plastic keyboard stands, 560 × 260	1
NCC57053	落地式主机托架 Landing host computer stand	1
NCC02195	带冲孔立杆支架, 2M900 × 1359 Punching upright frame, 2M900 × 1359	1
NCC02183	照明灯斜撑支架, M1830 × 400 Light support bracket, M1830 × 400	1
NCC03123	钢制LED照明灯, 1200 × 30W Steel shell LED light lamp, 1200 × 30W	1
NCC38295	百叶孔上挡板, M900 × 390 Louvered plate, M750 × 390	1
NCC38195	方孔上挡板, 灰色, M900 × 390 Square hole plate, gray, M750 × 390	1
NCC18903	防静电钢制搁板, M900 × 300 Anti-static steel shelf, M900 × 300	2
NCC57201	显示器支架挂架 Display rack	1
NCZ18122	防静电注塑料盒, 中号 Anti-static injection plastic box, medium	2
NCK69002	斜面钢制电源线盒, 2M900 Slant steel socket box, 2M900	1



组合编号 | Combination NO. NCA04202

重型可调式工作台

Heavy adjustable workbench



组合编号 | Combination NO. NCA04301

技术参数 Technical data

产品编号 Product NO.	NCA76120	NCA78120	NC79120	NCA76153	NCA78153	NCA79153	NCA76183	NCA78183	NCA79183	NCA76228	NCA78228	NCA79228
产品型号 Product model	1200*600	1200*750	1200*900	1530*600	1530*750	1530*900	1830*600	1830*750	1830*900	2280*600	2280*750	2280*900
防静电性能 ESD property	1 × 10 ⁹ ~1 × 10 ¹⁰ Ω											
承载能力 Load capacity	均匀载重：1000kg Uniform load: 1000kg											
环境温度 Ambient temperature	10~35℃											
环境湿度 Ambient humidity	15~75%											
外形尺寸 Shape size (mm)	长L											
	宽W/D											
	高H											
应用描述 Application description	整体防静电工作台台选，实现整体防静电性能，静电释放更安全更实用。 The anti-static table required to achieve the overall antistatic performance, ESD is safer and more practical.											



重型可调式工作台

Heavy adjustable workbench



组合编号 | Combination NO. NCA04401



组合编号 | Combination NO. NCA04402



组合编号 | Combination NO. NCA04403



组合编号 | Combination NO. NCA04404



组合编号 | Combination NO. NCA04405



组合编号 | Combination NO. NCA04406



组合编号 | Combination NO. NCA04407



组合编号 | Combination NO. NCA04408



组合编号 | Combination NO. NCA04409

重型固定式工作台 Heavy fixed workbench



组合编号 | Combination NO. NCA04501

技术参数 Technical data

产品编号 Product NO.	NCA86120	NCA88120	NC89120	NCA86153	NCA88153	NCA89153	NCA86183	NCA88183	NCA89183	NCA86228	NCA88228	NCA89228
产品型号 Product model	1200*600	1200*750	1200*900	1530*600	1530*750	1530*900	1830*600	1830*750	1830*900	2280*600	2280*750	2280*900
防静电性能 ESD property	1 × 10 ⁹ ~1 × 10 ¹⁰ Ω											
承载能力 Load capacity	均匀载重: 1000kg Uniform load: 1000kg											
环境温度 Ambient temperature	10~35℃											
环境湿度 Ambient humidity	15~75%											
外形尺寸 Shape size (mm)	长L	1200	1200	1200	1530	1530	1530	1830	1830	1830	2280	2280
	宽W/D	600	750	900	600	750	900	600	750	900	600	750
	高H	760	760	760	760	760	760	760	760	760	760	760
应用描述 Application description	整体防静电工作台必选，实现整体防静电性能，静电释放更安全更实用 The anti-static table required to achieve the overall antistatic performance, ESD is safer and more practical.											

重型固定式工作台 Heavy fixed workbench



组合编号 | Combination NO. NCA04601



组合编号 | Combination NO. NCA04602



组合编号 | Combination NO. NCA04603



组合编号 | Combination NO. NCA04604



组合编号 | Combination NO. NCA04605



组合编号 | Combination NO. NCA04606



组合编号 | Combination NO. NCA04607



组合编号 | Combination NO. NCA04607



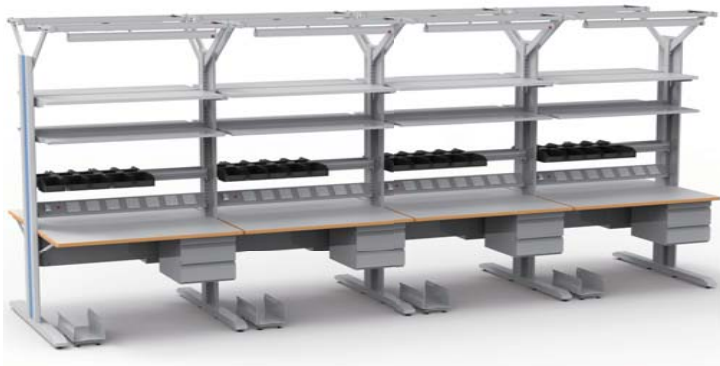
组合编号 | Combination NO. NCA04609

防静电塔型工作台
Standard adjustable workbench



组合编号 | Combination NO. NCA04701

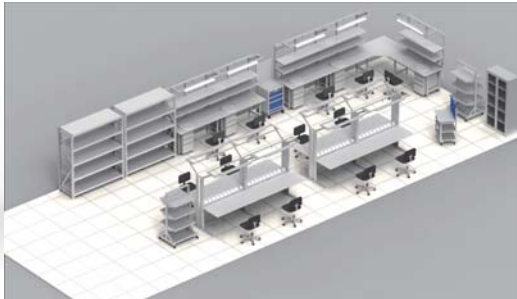
技术参数 Technical data									
产品编号 Product NO.	NCA96120	NCA98120	NC99120	NCA96153	NCA98153	NCA99153	NCA96183	NCA98183	NCA99183
产品型号 Product model	1200*600	1200*750	1200*900	1530*600	1530*750	1530*900	1830*600	1830*750	1830*900
防静电性能 ESD property	1 × 10 ⁶ ~1 × 10 ⁹ Ω								
承载能力 Load capacity	均匀载重: 300kg Uniform load: 300kg								
环境温度 Ambient temperature	10~35℃								
环境湿度 Ambient humidity	15~75%								
外形尺寸 Shape size (mm)	长L 1200	1200	1200	1530	1530	1530	1830	1830	1830
宽W/D	600	750	900	600	750	900	600	750	900
高H	2000	2000	2000	2000	2000	2000	2000	2000	2000
应用描述 Application description	整体防静电工作台必须, 实现整体防静电性能, 静电释放更安全更实用 The anti-static table required to achieve the overall antistatic performance, ESD is safer and more practical.								



防静电塔型工作台
Standard adjustable workbench



组合编号 | Combination NO. NCA04801



组合编号 | Combination NO. NCA04802



组合编号 | Combination NO. NCA04803

防静电工作台附件 ESD accessories of workbench



防静电布线槽 | Anti-static cable fixing cover

技术参数 Technical data

产品编号 Product NO.	NCC70885	NCC70895	NCC70825
防静电性能 ESD property	1 × 10 ⁶ ~1 × 10 ⁹ Ω		
颜色 Color	灰白色/蓝色 Gray / Blue RAL7035 / RAL7058		
环境温度 Ambient temperature	10~35℃		
环境湿度 Ambient humidity	15~75%		
外形尺寸 Shape size	长L 750 宽W/D 360 高H 55	900 360 55	1200 360 55
应用描述 Application description	用于布线并隐藏多余强电或弱电线缆 Used for wiring and concealment of electric cables		

键盘架 | Keyboard Stands

技术参数 Technical data

产品编号 Product NO.	NCC70885	NCC70895	NCC70825
材质 Material quality	塑料 Plastic	木制 Wooden	钢制 Steel
均匀承重 Uniform load	10kg	10kg	10kg
环境温度 Ambient temperature	10~35℃		
环境湿度 Ambient humidity	15~75%		
外形尺寸 Shape size	长L 560 宽W/D 260 高H 45	600 300 50	600 300 50
应用描述 Application description	标配两节滚珠滑轨，用于放置键盘 Two slid rails, used for placing a keyboard.		



显示器托盘支架 | Display tray bracket

技术参数 Technical data

产品编号 Product NO.	NCC57053
托盘尺寸 Tray size	420 × 300mm
均匀承重 Uniform load	10kg
描述 Description	伸缩摇摆，大角度旋转，可选配键盘托盘 Telescopic swaying, Large angle rotation, optional keyboard pallet



显示器拐臂挂架 | Display rack

技术参数 Technical data

产品编号 Product NO.	NCC57201
支持孔距 Hole distance	100 × 100mm 75 × 75mm
均匀承重 Uniform load	10kg
描述 Description	伸缩摇摆，360° 旋转，可选配键盘托盘 Telescopic swaying, 360° rotation, optional keyboard pallet

防静电工作台附件 ESD accessories of workbench



活页文件夹支架 | Loose-leaf folder

技术参数 Technical data

产品编号 Product NO.	NCC50206
托盘尺寸 Tray size	240 × 330mm
均匀承重 Uniform load	10kg
描述 Description	标配活页文件夹10片，大角度旋转 Telescopic swaying, Large angle rotation, optional keyboard pallet



塑料料盒托架 | Plastic box bracket

技术参数 Technical data

产品编号 Product NO.	NCC54621
托盘尺寸 Tray size	550 × 185 × 125mm
均匀承重 Uniform load	15kg
描述 Description	用于放置塑料料盒，大角度旋转 It is used for placing plastic box, which can be rotated in a large angle.



侧挂式主机托架 | Side mounted host computer stand

技术参数 Technical data

产品编号 Product NO.	NCC80055
托盘尺寸 Tray size	(180~225) × 400 × 50mm
均匀承重 Uniform load	30kg
描述 Description	宽度范围内任意调节 Arbitrary adjustment within the width range

落地式主机托架 | Landing host computer stand

技术参数 Technical data

产品编号 Product NO.	NCC57053
托盘尺寸 Tray size	(130~210) × 400 × 120mm
均匀承重 Uniform load	50kg
描述 Description	可配脚轮，宽度范围内任意调节 Optional matching casters, within the width of arbitrary adjustment.



防静电脚踏 | Antistatic foot tread

技术参数 Technical data

产品编号 Product NO.	NCC83535
托盘尺寸 Tray size	600 × 400 × 390mm
均匀承重 Uniform load	50kg
描述 Description	可任意调节角度、高度 The angle and height can be adjusted arbitrarily

斜面钢制电源线盒 Slant steel socket box

- 以用户实际应用为主导，独具特色的设计理念，斜面钢制电源线盒可拆卸式盖板设计，使得维护或拆换对应制式的电源器件更为灵活便利
- 主要配合380V、220V、110V等交流电源使用，也可以配合所需的直流电源使用
- 可选配各类控制开关器件、国际常用电源插座（国标、欧标、美标、英标、意标等）、航空插座、漏电保护器、交直流器件等
- 根据需要还可以选配各类气动组件、气体管路连接、气压表、气接头等
- 总电路控制实现各产线总线合理布局、分路控制，有效分配用电负载，保障生产用电安全
- Taking the user practical application as the leading and unique design concept, the design of the detachable cover plate of the inclined steel power line box makes the maintenance or replacement of the corresponding power supply device more flexible and convenient.
- It is mainly used with 380V, 220V, 110V and other AC power supply, and it can also be used with the required DC power supply. Can be equipped with various types of control switch and power socket (international common standard, European standard, British standard, mark American Standard, etc.), aviation socket, leakage protection, DC device etc..
- All kinds of pneumatic components, gas pipeline connection, barometer, gas connection head and so on can be selected according to the needs.
- The total circuit control realizes the rational distribution and dividing control of each line bus, effectively distributes the electric load, and ensures the safety of production.



组合编号 | Combination NO. NC05201

斜面钢制电源线盒2M750 | Slant steel socket box 2M750

配置清单 Configuration list

产品编号 Product NO.	产品名称及尺寸 (mm) Product name and size	数量 Qty
NCK50751	斜面钢制电源线盒主, M750 x 100 x 100 Main parts of slant steel socket box, M750 x 100 x 100	1
NCK50752	斜面钢制电源线盒辅, M750 x 100 x 100 Auxiliary parts of slant steel socket box, M750 x 100 x 100	1
NCK05801	施耐德漏电保护器 DPN-C16 Vigi Schneider leakage protector DPN-C16 Vigi	1
NCK05802	电源指示灯, 红色, 220V Power indicator, red, 220V	1
NCK05803	罗格朗五孔多功能插座 Legrand five hole multi function socket	8

斜面钢制电源线盒M1200 | Slant steel socket box M1200

配置清单 Configuration list

产品编号 Product NO.	产品名称及尺寸 (mm) Product name and size	数量 Qty
NCK50121	斜面钢制电源线盒, M1200 x 100 x 100 Slant steel socket box, M1200 x 100 x 100	1
NCK05801	施耐德漏电保护器 DPN-C16 Vigi Schneider leakage protector DPN-C16 Vigi	1
NCK05802	电源指示灯, 红色, 220V Power indicator, red, 220V	1
NCK05803	罗格朗五孔多功能插座 Legrand five hole multi function socket	7



K组合编号 | Combination NO. NCK05202



组合编号 | Combination NO. NCK05203



斜面钢制电源线盒M1200 | Slant steel socket box M1200

配置清单 Configuration list

产品编号 Product NO.	产品名称及尺寸 (mm) Product name and size	数量 Qty
NCK50122	斜面钢制电源线盒, M1200 x 100 x 100 Slant steel socket box, M1200 x 100 x 100	1
NCK05801	施耐德漏电保护器 DPN-C16 Vigi Schneider leakage protector DPN-C16 Vigi	1
NCK05802	电源指示灯, 红色, 220V Power indicator, red, 220V	1
NCK05803	罗格朗五孔多功能插座 Legrand five hole multi function socket	8
NCK05804	快速自锁式气接头 Fast self locking air connector	2



照明灯斜撑支架 Light support bracket

- 国际主流外形设计，高承重性结构
- 双向设计，可前后任意调节位置以适应使用的需要，也可在滑轨上横向任意调节相应位置
- 配置C形滑轨，便于悬挂平衡器配合电动工具或气动工具的使用，也可选配照明灯具增加照明
- International mainstream design, high load-bearing structure.
- Two-way design, can adjust the position of front and back to meet the needs of use, and also can adjust the corresponding position arbitrarily on the slide rail.
- C shaped slide rail is configured to facilitate the use of suspension balancer with electric tools or pneumatic tools, and also to choose lighting fixtures to increase lighting.



照明灯斜撑支架 M1200 × 400
Light support bracket M1200 × 400
产品编号 | Product NO. NCC02120



照明灯斜撑支架 M1530 × 400/M1830 × 400
Light support bracket M1530 × 400/M1830 × 400
产品编号 | Product NO. NCC02153/NCC02183



照明灯斜撑支架 M2280 × 400
Light support bracket M2280 × 400
产品编号 | Product NO. NCC02228



技术参数 Technical data

产品编号 Product NO.	NCC02120	NCC02153	NCC02183	NCC02228	
产品型号 Product model	1200 × 400	1530 × 400	1830 × 400	2280 × 400	
防静电性能 ESD property	1 × 10 ⁶ ~1 × 10 ⁹ Ω				
颜色 Color	灰白色/蓝色 RAL7035 / RAL7058				
环境温度 Ambient temperature	10~35℃				
环境湿度 Ambient humidity	15~75%				
外形尺寸 Shape size	长L	1200	1530	1830	2280
	宽W/D	600	600	600	600
	高H	380	380	380	380
应用描述 Application description	斜撑支架主要用于悬挂照明灯、离子风机、电动工具、平衡器等 The bracing support is mainly used for hanging light, ion fan, electric tool, balancer, etc.				



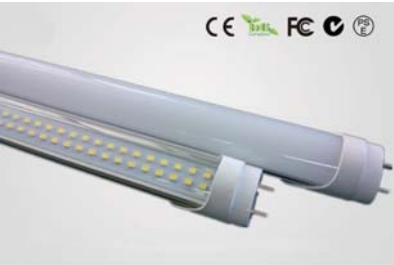
环保型钢制LED照明灯 Steel shell LED light lamp

- 钢制金属外壳，散热极好，合理的结构设计，高档美观
- 选用高品质、高亮度的双排LED光源，无眩光、无闪烁，均匀发光
- 采用恒流驱动可更有效提升使用寿命，大限度的降低能耗，绿色环保
- 宽电压输入：AC 85V~275V，在相同照度下，相比传统日光灯，省电能高达62%
- Steel metal shell, excellent heat dissipation, reasonable structure design, high quality and beautiful.
- With high quality, high brightness, double row LED light source, no glare, no scintillation, uniform luminescence.
- The use of constant current drive can improve the service life more effectively, reduce energy consumption to a large extent, and green environmental protection.
- Wide voltage input: AC 85V~275V, under the same illumination, compared with traditional fluorescent lamp, the power saving efficiency is up to 62%.



技术参数 Technical data

产品编号 Product NO.	NCC03092	NCC03123	
产品型号 Product model	900*20W	1200*30W	
光线强度 Light intensity	800Lux	1000Lux	
外壳颜色 Shell Color	灰白色/蓝色 Gray / Blue		
环境温度 Ambient temperature	10~35℃		
环境湿度 Ambient humidity	15~75%		
外形尺寸 Shape size	长L	900	1200
	宽W/D	80	80
	高H	55	55
应用描述 Application description	双排LED灯珠，进口散光板，光源均匀散布 Double LED lamp, Imported astigmatic plate, uniform light source		

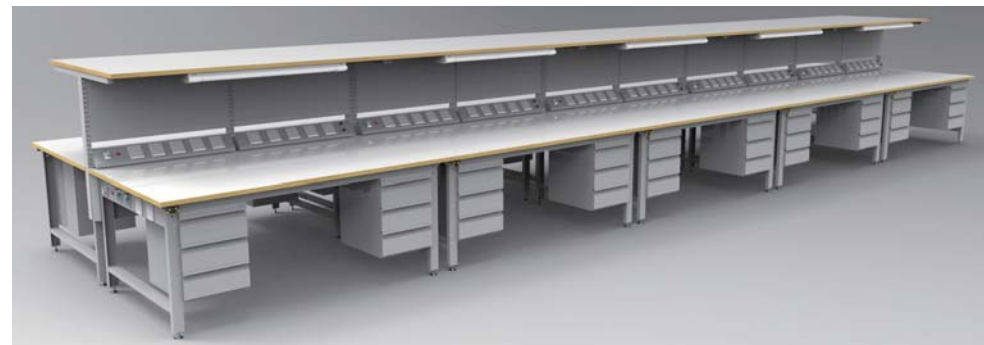


量身定制防静电工作台 Custom-made anti-static workbench

- 拥有强大的工业设计、结构设计专业技术团队
- 依据实际需求，定制化设计，为您量身定制，设计方案可行性高
- 选用长效稳定性的防静电材料制作，防静电性能： $1 \times 10^6 \sim 1 \times 10^9 \Omega$
- 极力实现艺术与实用最恰当的结合，成就符合企业独特设计理念的防静电工作台
- We have a strong technical team of industrial design and structural design.
- According to the actual needs, customized design, customized for you, the design scheme is highly feasible.
- We have selected long-acting and stable antistatic materials. Antistatic performance: $1 \times 10^6 \sim 1 \times 10^9 \Omega$
- The most appropriate combination of art and practicality is achieved, and the anti static workbench which meets the unique design concept of the enterprise is achieved.



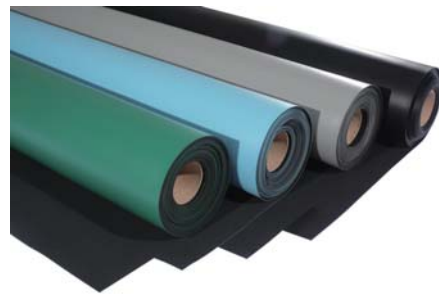
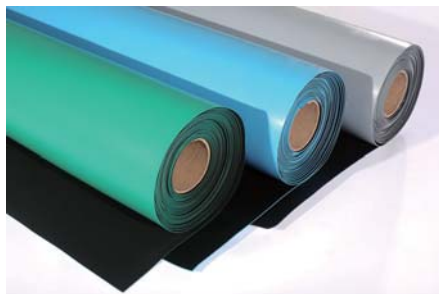
量身定制防静电工作台 Custom-made anti-static workbench



防静电环保无油无味型台垫

Anti – static and environment–friendly, tasteless and tasteless mats

- 选用优质环保丁晴橡胶为主要原料，添加优质导电填料，自主配制而成的防静电环保无油无味台垫，充分融合，各成分分布非常均匀
- 正面静电耗散层： $1 \times 10^5 \Omega \sim 1 \times 10^9 \Omega$ ；反面静电导电层： $< 1 \times 10^5 \Omega$ ，静电泄放时间 $< 1.9s$ ，防静电性能稳定性持续2~3年
- 具有耐磨、耐酸碱、高弹性、抗老化、防辐射、防震、抗疲劳等功能
- 表面无明显散光或反光，有效缓解视觉疲劳
- The antistatic, environment–friendly, oil–free and tasteless cushion made of high quality environmental friendly Ding Qing rubber as main raw material and high quality conductive filler is fully integrated, and the distribution of each component is very uniform.
- The positive electrostatic dissipative layer: $1 \times 10^5 \Omega \sim 1 \times 10^9 \Omega$, the reverse electrostatic conductive layer: $< 1 \times 10^5 \Omega$, the electrostatic discharge time $< 1.9s$, the stability of antistatic property for 2~3 years.
- It has the functions of wear–resisting, acid and alkali resistance, high elasticity, anti aging, radiation proof, shock proof and anti fatigue.
- There is no apparent astigmatism or reflection on the surface, which can effectively relieve visual fatigue.



防静电1:1实心台垫 | Anti–static 1:1 solid mats

技术参数 Technical data

产品编号 Product NO.	NCE08508	NCE08509	NCE08510
颜色 Color	绿色 Green	蓝色 Blue	灰色 Gray
外观性能 Appearance performance	平纹，低亮光，反光柔和不刺眼 Plain, low light, soft and no glare		
环境温度 Ambient temperature	10~35℃		
环境湿度 Ambient humidity	15~75%		
产品规格 Product specification	0.8m × 10m × 2mm 1.0m × 10m × 2mm 1.2m × 10m × 2mm		
应用描述 Application description	用于铺设在工作台台面上 It is used to lay on the table of the workbench.		

防静电发泡台垫 | Anti–static foamed mats

技术参数 Technical data

产品编号 Product NO.	NCE08108	NCE08109	NCE08110	NCE08111
颜色 Color	绿色 Green	蓝色 Blue	灰色 Gray	黑色 Black
外观性能 Appearance performance	平纹，低亮光，反光柔和不刺眼 Plain, low light, soft and no glare			
环境温度 Ambient temperature	10~35℃			
环境湿度 Ambient humidity	15~75%			
产品规格 Product specification	0.8m × 10m × 2mm 1.0m × 10m × 2mm 1.2m × 10m × 2mm			
应用描述 Application description	用于铺设在工作台台面上 It is used to lay on the table of the workbench.			



防静电环保无味无油型台垫

Antistatic and environment–friendly and oil–free table mats



防静电防滑台垫 | Anti–static non–slip mats

技术参数 Technical data

产品编号 Product NO.	NCE08208	NCE08209	NCE08210
颜色 Color	绿色 Green	蓝色 Blue	黑色 Black
外观性能 Appearance performance	宝塔纹，低亮光，反光柔和不刺眼 Pagoda pattern, low light, soft and no glare		
环境温度 Ambient temperature	10~35℃		
环境湿度 Ambient humidity	15~75%		
产品规格 Product specification	0.8m × 10m × 2mm 1.0m × 10m × 2mm 1.2m × 10m × 2mm		
应用描述 Application description	用于铺设在工作台台面上 It is used to lay on the table of the workbench.		

防静电同色发泡台垫 | Anti–static same color foamed mats

技术参数 Technical data

产品编号 Product NO.	NCE08509	NCE08510
颜色 Color	蓝色 Blue	灰色 Gray
外观性能 Appearance performance	宝塔纹，低亮光，反光柔和不刺眼 Pagoda pattern, low light, soft and no glare	
环境温度 Ambient temperature	10~35℃	
环境湿度 Ambient humidity	15~75%	
产品规格 Product specification	0.8m × 10m × 2mm 1.0m × 10m × 2mm 1.2m × 10m × 2mm	
应用描述 Application description	用于铺设在工作台台面上 It is used to lay on the table of the workbench.	



防静电高级纺织面工作椅 Antistatic high-end textile face chair

- 符合人体工程学原理，散热透气，质感舒适，高档美观
- 整体防静电，结构采用静电安全释放路径设计，防静电性能： $<1 \times 10^9 \Omega$
- 工作椅坚固耐用，椅背拉力强度测试为：70~110kg
- According to the principle of ergonomics, heat dissipation, ventilation, comfortable quality, high quality beauty
- Overall static electricity, the structure adopts the electrostatic safety release path design, antistatic performance: $1 \times 10^9 \sim 1 \times 10^{10} \Omega$
- Strong and durable work chair, tensile strength test of back seat: 70~110kg

配置清单 Configuration list

产品编号 Product NO.	产品名称及尺寸 (mm) Product name and size	数量 Qty
NCW15001	高级纺织面椅座 (480 × 430) ; 椅背 (430 × 400) High-end textile face seat (480 × 430); back (430 × 400)	1
NCW15101	单项调节底盘支架 Single adjustment chassis support	1
NCW15201	高端电镀导电升降杆, V160 High-end electroplated lifter, V160	1
NCW15301	外贸金属电镀五星脚 Foreign trade metal electroplated five star feet	1
NCW15401	导电塑料脚轮 (插杆式, 黑色), 直径50mm Conductive plastic casters (plug type, black), $\varnothing 50\text{mm}$	5



组合编号 | Combination NO. NCW05902



组合编号 | Combination NO. NCW05901

配置清单 Configuration list

产品编号 Product NO.	产品名称及尺寸 (mm) Product name and size	数量 Qty
NCW15002	高级纺织面连体靠背椅座 High-end textile surface conjoined chair seat	1
NCW15102	加强型底盘支架 Reinforced chassis support	1
NCW15201	高端电镀导电升降杆, V160 High-end electroplated lifter, V160	1
NCW15302	外贸一次成型电镀五星脚 Foreign trade once formed electroplating five star feet	1
NCW15401	导电塑料脚轮 (插杆式, 黑色), 直径50mm Conductive plastic casters (plug type, black), $\varnothing 50\text{mm}$	5

防静电高级纺织面工作椅 Antistatic high-end textile face chair



配置清单 Configuration list

产品编号 Product NO.	产品名称及尺寸 (mm) Product name and size	数量 Qty
NCW15003	高级纺织面椅座 (480 × 430) ; 椅背 (430 × 400) High-end textile face seat (480 × 430); back (430 × 400)	1
NCW15103	多项调节底盘支架 Multi adjustment chassis support	1
NCW15201	高端电镀导电升降杆, V160 High-end electroplated lifter, V160	1
NCW15302	外贸一次成型电镀五星脚 Foreign trade once formed electroplating five star feet	1
NCW15401	导电塑料脚轮 (插杆式, 黑色), 直径50mm Conductive plastic casters (plug type, black), $\varnothing 50\text{mm}$	5



组合编号 | Combination NO. NCW06001



组合编号 | Combination NO. NCW06002

配置清单 Configuration list

产品编号 Product NO.	产品名称及尺寸 (mm) Product name and size	数量 Qty
NCW15005	高级PU面椅座 (480 × 430) ; 椅背 (430 × 400) High-end PU face seat (480 × 430); back (430 × 400)	1
NCW15103	多项调节底盘支架 Multi adjustment chassis support	1
NCW15201	高端电镀导电升降杆, V160 High-end electroplated lifter, V160	1
NCW15302	外贸一次成型电镀五星脚 Foreign trade once formed electroplating five star feet	1
NCW15401	导电塑料脚轮 (插杆式, 黑色), 直径50mm Conductive plastic casters (plug type, black), $\varnothing 50\text{mm}$	5

防静电聚氨酯发泡工作椅 Antistatic PU foam chair

- 符合人体工程学原理，软硬适中，质感舒适，高档美观
- 整体防静电，结构采用静电安全释放路径设计，防静电性能： $<1 \times 10^9 \Omega$
- 工作椅坚固耐用，椅背拉力强度测试为：70~110kg
- According to the principle of ergonomics, heat dissipation, ventilation, comfortable quality, high quality beauty
- Overall static electricity, the structure adopts the electrostatic safety release path design, antistatic performance: $1 \times 10^9 \sim 1 \times 10^{10} \Omega$
- Strong and durable work chair, tensile strength test of back seat: 70~110kg



组合编号 | Combination NO. NCW06101



组合编号 | Combination NO. NCW06102

配置清单 Configuration list

产品编号 Product NO.	产品名称及尺寸 (mm) Product name and size	数量 Qty
NCW15006	聚氨酯发泡椅座 (480 × 430) ; 椅背 (430 × 400) PU foam seat (480 × 430); back (430 × 400)	1
NCW15105	6mm弹性钢板靠背底座支架 6mm elastic steel plate backrest chassis support	1
NCW15202	高端电镀导电升降杆, 加高型, V240 High-end electroplated lifter, Higher type, V240	1
NCW15601	金属镀铬脚踏圈 Chromium plated tread	1
NCW15302	外贸一次成型电镀五星脚 Foreign trade once formed electroplating five star feet	1
NCW15401	导电塑料脚轮 (插杆式, 黑色), 直径50mm Conductive plastic casters (plug type, black), $\phi 50\text{mm}$	5

配置清单 Configuration list

产品编号 Product NO.	产品名称及尺寸 (mm) Product name and size	数量 Qty
NCW15007	聚氨酯发泡椅座 (480 × 430) ; 椅背 (430 × 400) PU foam seat (480 × 430); back (430 × 400)	1
NCW15105	6mm弹性钢板靠背底座支架 6mm elastic steel plate backrest chassis support	1
NCW15201	高端电镀导电升降杆, V160 High-end electroplated lifter, V160	1
NCW15302	外贸一次成型电镀五星脚 Foreign trade once formed electroplating five star feet	1
NCW15402	导电铝合金脚轮 (插杆式, 黑色), 直径50mm Conductive aluminum alloy casters (plug type, black), $\phi 50\text{mm}$	5



组合编号 | Combination NO. NCW06103

配置清单 Configuration list

产品编号 Product NO.	产品名称及尺寸 (mm) Product name and size	数量 Qty
NCW15008	聚氨酯发泡椅座 (480 × 430) PU foam seat (480 × 430)	1
NCW15102	加强型底座支架 Reinforced chassis support	1
NCW15201	高端电镀导电升降杆, V160 High-end electroplated lifter, V160	1
NCW15302	外贸一次成型电镀五星脚 Foreign trade once formed electroplating five star feet	1
NCW15401	导电塑料脚轮 (插杆式, 黑色), 直径50mm Conductive plastic casters (plug type, black), $\phi 50\text{mm}$	5

防静电聚氨酯发泡工作椅 Antistatic PU foam chair



组合编号 | Combination NO. NCW06201



组合编号 | Combination NO. NCW06201

配置清单 Configuration list

产品编号 Product NO.	产品名称及尺寸 (mm) Product name and size	数量 Qty
NCW15009	聚氨酯发泡椅座 (480 × 430) ; 椅背 (430 × 400) PU foam seat (480 × 430); back (430 × 400)	1
NCW15105	6mm弹性钢板靠背底座支架 6mm elastic steel plate backrest chassis support	1
NCW15201	高端电镀导电升降杆, V160 High-end electroplated lifter, V160	1
NCW15302	外贸一次成型电镀五星脚 Foreign trade once formed electroplating five star feet	1
NCW15402	导电铝合金脚轮 (插杆式, 黑色), 直径50mm Conductive aluminum alloy casters (plug type, black), $\phi 50\text{mm}$	5

配置清单 Configuration list

产品编号 Product NO.	产品名称及尺寸 (mm) Product name and size	数量 Qty
NCW15010	聚氨酯发泡椅座 (480 × 430) ; 椅背 (430 × 400) PU foam seat (480 × 430); back (430 × 400)	1
NCW15105	6mm弹性钢板靠背底座支架 6mm elastic steel plate backrest chassis support	1
NCW15201	高端电镀导电升降杆, V160 High-end electroplated lifter, V160	1
NCW15302	外贸一次成型电镀五星脚 Foreign trade once formed electroplating five star feet	1
NCW15401	导电塑料脚轮 (插杆式, 黑色), 直径50mm Conductive casters (plug type, black), $\phi 50\text{mm}$	5



组合编号 | Combination NO. NCW06201



组合编号 | Combination NO. NCW06201

配置清单 Configuration list

产品编号 Product NO.	产品名称及尺寸 (mm) Product name and size	数量 Qty
NCW15011	聚氨酯发泡圆形椅座 (直径420mm) PU foamed round seat ($\phi 420\text{mm}$)	1
NCW15102	加强型底座支架 Reinforced chassis support	1
NCW15202	高端电镀导电升降杆, V240 High-end electroplated lifter, V240	1
NCW15601	金属镀铬脚踏圈 Chromium plated tread	1
NCW15302	外贸一次成型电镀五星脚 Foreign trade once formed electroplating five star feet	5
NCW15401	导电塑料脚轮 (插杆式, 黑色), 直径50mm Conductive plastic casters (plug type, black), $\phi 50\text{mm}$	5

配置清单 Configuration list

产品编号 Product NO.	产品名称及尺寸 (mm) Product name and size	数量 Qty
NCW15012	聚氨酯发泡圆形椅座 (直径420mm) PU foamed round seat ($\phi 420\text{mm}$)	1
NCW15102	加强型底座支架 Reinforced chassis support	1
NCW15201	高端电镀导电升降杆, V160 High-end electroplated lifter, V160	1
NC15302	外贸一次成型电镀五星脚 Foreign trade once formed electroplating five star feet	1
NC15401	导电塑料脚轮 (插杆式, 黑色), 直径50mm Conductive plastic casters (plug type, black), $\phi 50\text{mm}$	5



防静电聚氨酯皮革工作椅 Antistatic PU leather face chair

- 符合人体工程学原理，柔软透气，质感舒适，高档美观
- 整体防静电，结构采用静电安全释放路径设计，防静电性能： $<1 \times 10^9 \Omega$
- 工作椅坚固耐用，椅背拉力强度测试为：70~110kg
- According to the principle of ergonomics, it is soft and breathable, the texture is comfortable and the high quality is beautiful.
- Overall static electricity, the structure adopts the electrostatic safety release path design, antistatic performance: $1 \times 10^9 \sim 1 \times 10^{10} \Omega$
- Strong and durable work chair, tensile strength test of back seat: 70~110kg



组合编号 | Combination NO. NCW06301

配置清单 Configuration list

产品编号 Product NO.	产品名称及尺寸 (mm) Product name and size	数量 Qty
NCW15015	聚氨酯皮革椅座 (480 x 430) ; 椅背 (430 x 400) ; 黑色 PU leather face seat (480 x 430); back (430 x 400); black	1
NCW15105	6mm弹性钢板靠背底座支架 6mm elastic steel plate backrest chassis support	1
NCW15201	高端电镀导电升降杆, V160 High-end electroplated lifter, V160	1
NCW15301	外贸金属电镀五星脚 Foreign trade metal electroplated five star feet	1
NCW15401	导电塑料脚轮 (插杆式, 黑色), 直径50mm Conductive plastic casters (plug type, black), $\varnothing 50\text{mm}$	5

组合编号 | Combination NO. NCW06302

配置清单 Configuration list

产品编号 Product NO.	产品名称及尺寸 (mm) Product name and size	数量 Qty
NCW15016	聚氨酯皮革椅座 (480 x 430) ; 椅背 (430 x 400) ; 黑色 PU leather face seat (480 x 430); back (430 x 400); black	1
NCW15105	6mm弹性钢板靠背底座支架 6mm elastic steel plate backrest chassis support	1
NCW15201	高端电镀导电升降杆, V160 High-end electroplated lifter, V160	1
NCW15301	外贸金属电镀五星脚 Foreign trade metal electroplated five star feet	1
NCW15401	导电塑料脚轮 (插杆式, 黑色), 直径50mm Conductive plastic casters (plug type, black), $\varnothing 50\text{mm}$	5

防静电聚氨酯皮革工作椅 Antistatic PU leather face chair

- 所有工作椅均可任意选择搭配不同高度的升降杆
- 所有工作椅均可以选配金属镀铬脚踏圈
- 所有工作椅均可任意选择搭配不同样式的五星爪
- According to the principle of ergonomics, heat dissipation, ventilation, comfortable quality, high quality beauty
- Overall static electricity, the structure adopts the electrostatic safety release path design, antistatic performance: $1 \times 10^9 \sim 1 \times 10^{10} \Omega$
- Strong and durable work chair, tensile strength test of back seat: 70~110kg



组合编号 | Combination NO. NCW06401

配置清单 Configuration list

产品编号 Product NO.	产品名称及尺寸 (mm) Product name and size	数量 Qty
NCW15017	聚氨酯皮革圆形椅座 (直径420mm) ; 黑色 PU leather face round seat ($\varnothing 420\text{mm}$); black	1
NCW15102	加强型底盘支架 Reinforced chassis support	1
NCW15201	高端电镀导电升降杆, V160 High-end electroplated lifter, V160	1
NCW15302	外贸一次成型电镀五星脚 Foreign trade once formed electroplating five star feet	1
NCW15403	导电塑料脚轮 (插杆式, 灰色), 直径50mm Conductive plastic casters (plug type, gray), $\varnothing 50\text{mm}$	5

组合编号 | Combination NO. NCW06402

配置清单 Configuration list

产品编号 Product NO.	产品名称及尺寸 (mm) Product name and size	数量 Qty
NCW15018	聚氨酯皮革圆形椅座 (直径420mm) ; 蓝色 PU leather face round seat ($\varnothing 420\text{mm}$); black	1
NCW15102	加强型底盘支架 Reinforced chassis support	1
NCW15201	高端电镀导电升降杆, V160 High-end electroplated lifter, V160	1
NCW15301	外贸金属电镀五星脚 Foreign trade metal electroplated five star feet	1
NCW15405	导电塑料脚杯 (插杆式, 黑色), 直径50mm Conductive plastic foot cup (plug type, black), $\varnothing 50\text{mm}$	5



组合编号 | Combination NO. NCW06403

配置清单 Configuration list

产品编号 Product NO.	产品名称及尺寸 (mm) Product name and size	数量 Qty
NCW15019	聚氨酯皮革圆形椅座 (直径420mm) ; 黑色 PU leather face round seat ($\varnothing 420\text{mm}$); black	1
NCW15102	加强型底盘支架 Reinforced chassis support	1
NCW15201	高端电镀导电升降杆, V160 High-end electroplated lifter, V160	1
NCW15301	外贸金属电镀五星脚 Foreign trade metal electroplated five star feet	1
NCW15401	导电塑料脚轮 (插杆式, 黑色), 直径50mm Conductive plastic casters (plug type, black), $\varnothing 50\text{mm}$	5



组合编号 | Combination NO. NCW06405

配置清单 Configuration list

产品编号 Product NO.	产品名称及尺寸 (mm) Product name and size	数量 Qty
NCW15020	聚氨酯皮革圆形椅座 (直径420mm) ; 蓝色 PU leather face round seat ($\varnothing 420\text{mm}$); black	1
NCW15102	加强型底盘支架 Reinforced chassis support	1
NCW15201	高端电镀导电升降杆, V160 High-end electroplated lifter, V160	1
NCW15301	外贸金属电镀五星脚 Foreign trade metal electroplated five star feet	1
NCW15401	导电塑料脚轮 (插杆式, 黑色), 直径50mm Conductive plastic casters (plug type, black), $\varnothing 50\text{mm}$	5

金属镀铬线网架 Chrome wire mesh shelf

- 由钢丝网焊接而成，表面镀铬
- 加强型结构设计，满足各类工具、物料的存放
- 自由调整层数和层高，每层载重30kg
- It is made of steel wire mesh, and the surface is chrome plated.
- Strengthen the design of the structure to meet the storage of all kinds of tools and materials.
- The number and height of the layer are adjusted freely, and the weight of each layer is 30kg.



线网推车 | Wire mesh trolley

产品编号 Product NO.	NC06501
产品尺寸 Product size	900L x 450D x 1050H
描述 Description	三层搁板、导电轮 Three layer shelf, conductive wheel



线网推车 | Wire mesh trolley

产品编号 Product NO.	NC06502
产品尺寸 Product size	900L x 450D x 1600H
描述 Description	单波峰搁板、双波峰搁板 Single and double wave shelf



线网架 | Wire mesh shelf

产品编号 Product NO.	NC06503
产品尺寸 Product size	900L x 450D x 900H
描述 Description	三层搁板 Three layer shelf



线网推车 | Wire mesh trolley

产品编号 Product NO.	NC06504
产品尺寸 Product size	900L x 450D x 1050H
描述 Description	三层搁板、导电轮 Three layer shelf, conductive wheel



线网推车 | Wire mesh trolley

产品编号 Product NO.	NC06505
产品尺寸 Product size	900L x 450D x 1600H
描述 Description	单波峰搁板、双波峰搁板 Single and double wave shelf



防静电推车 Antistatic trolley



防静电仪器推车
Antistatic instrument trolley

产品编号 Product NO.	NC06601
产品尺寸 Product size	750L x 600D x (770~1220)H
描述 Description	防静电台面、导电脚轮 Antistatic table-top and conductive casters



防静电轻型推车
Antistatic light trolley

产品编号 Product NO.	NC06602
产品尺寸 Product size	650L x 450D x 750H
描述 Description	三层搁板、导电脚轮 Three layer shelf and conductive casters



防静电不锈钢推车
Antistatic stainless steel trolley

产品编号 Product NO.	NC06603
产品尺寸 Product size	850L x 450D x 900H
描述 Description	三层搁板、导电脚轮 Three layer shelf and conductive casters



防静电工业推车
Antistatic instrument trolley

产品编号 Product NO.	NC06604
产品尺寸 Product size	780L x 600D x 800H
描述 Description	防静电台面、导电脚轮 Antistatic surface and conductive casters



防静电工业推车
Antistatic instrument trolley

产品编号 Product NO.	NC06605
产品尺寸 Product size	780L x 600D x 800H
描述 Description	防静电台面、导电脚轮 Antistatic surface and conductive casters



防静电工业推车
Antistatic instrument trolley

产品编号 Product NO.	NC06605
产品尺寸 Product size	840L x 700D x 720H
描述 Description	防静电台面、导电脚轮 Antistatic surface and conductive casters



防静电工业推车
Antistatic instrument trolley

产品编号 Product NO.	NC06606
产品尺寸 Product size	800L x 600D x 800H
描述 Description	防静电台面、导电脚轮 Antistatic surface and conductive casters



防静电储物柜 Antistatic storage cabinet

- 选用0.8mm厚度的优质冷轧钢板加工制作而成，结构稳固结实
- 均可根据实际需求定制整体式或分体式
- 采用防静电烤漆工艺，整体防静电稳定十年，防静电性能： $1 \times 10^5 \sim 1 \times 10^9 \Omega$
- 用于存放电子元器件、半成品、辅料、零件、医疗器材等
- It is made of high quality cold rolled steel plate with 0.8mm thickness, and its structure is stable and strong.
- Can customize the integral or split type according to the actual demand.
- Antistatic coating process with antistatic stability for ten years, anti static performance: $1 \times 10^5 \sim 1 \times 10^9 \Omega$.
- Used for storage of electronic components, semi-finished products, accessories, parts, medical equipment, etc.



双开玻璃门储物柜
Double glass door cabinet

产品编号 Product NO.	NC06701
产品尺寸 Product size	900L × 400D × 1800H
描述 Description	带四层搁板，每层承重20kg four shelf, weight per layer: 20kg



双开门储物柜
Double open door cabinet

产品编号 Product NO.	NC06702
产品尺寸 Product size	900L × 400D × 1800H
描述 Description	带四层搁板，每层承重20kg four shelf, weight per layer: 20kg



上玻璃双开门储物柜
Double door cabinet

产品编号 Product NO.	NC06703
产品尺寸 Product size	900L × 400D × 1800H
描述 Description	带两层搁板，每层承重20kg Two shelf, weight per layer: 20kg



上玻璃双开门储物柜
Double open door cabinet

产品编号 Product NO.	NC06704
产品尺寸 Product size	900L × 400D × 1800H
描述 Description	带一层搁板，每层承重20kg One shelf, weight per layer: 20kg



上玻璃门双抽储物柜
Double glass door double drawer cabinet

产品编号 Product NO.	NC06705
产品尺寸 Product size	900L × 400D × 1800H
描述 Description	带一层搁板，每层承重20kg One shelf, weight per layer: 20kg



双开玻璃门五抽储物柜
Double glass door five drawer cabinet

产品编号 Product NO.	NC06706
产品尺寸 Product size	900L × 400D × 1800H
描述 Description	带一层搁板，每层承重20kg One shelf, weight per layer: 20kg



上下门双抽储物柜
Upper & lower door double drawer cabinet

产品编号 Product NO.	NC06707
产品尺寸 Product size	900L × 400D × 1800H
描述 Description	带一层搁板，每层承重20kg One shelf, weight per layer: 20kg



六门更衣柜
Six door locker

产品编号 Product NO.	NC06708
产品尺寸 Product size	900L × 500D × 1800H
描述 Description	更换工作服，存放衣物 Change clothes and store clothes

防静电储物柜（2017新款） Antistatic storage cabinet（new 2017）

- 零部件均采用模具加工制作，样式新颖，高档美观
- 采用防静电烤漆工艺，整体防静电稳定十年，防静电性能： $1 \times 10^5 \sim 1 \times 10^9 \Omega$
- 用于存放电子元器件、半成品、辅料、零件、医疗器材等
- All parts are made of mould, new style and high quality
- Antistatic coating process with antistatic stability for ten years, anti static performance: $1 \times 10^5 \sim 1 \times 10^9 \Omega$.
- Used for storage of electronic components, semi-finished products, accessories, parts, medical equipment, etc.



防静电加强型整理柜

Antistatic strengthening type cabinet

- 整体防静电，防静电性能： $<1 \times 10^9 \Omega$
- 加强型结构设计，满足各类工具、物料的存放
- 标准化设计，搁板、门板、背板均为选配件，不同搭配组合
- Overall static electricity, antistatic performance: $1 \times 10^9 \sim 1 \times 10^{10} \Omega$
- Strengthen the design of the structure to meet the storage of all kinds of tools and materials
- Standardized design, shelf, door plate, backboard are all selected parts, different combinations of combinations



物料盒整理柜
Material box cabinet

产品编号 Product NO.	NC06901
产品尺寸 Product size	1050L × 500D × 1800H
描述 Description	标配大号物料盒70个 Large material boxes 70



抽拉料盒整理柜
Pull-out box finishing cabinet

产品编号 Product NO.	NC06902
产品尺寸 Product size	1050L × 500D × 1800H
描述 Description	标配抽拉料盒90个 Pull-out boxes 90



双开门整理柜
Double door cabinet

产品编号 Product NO.	NC06903
产品尺寸 Product size	1050L × 500D × 1800H
描述 Description	标配大号物料盒70个 Large material boxes 70



加强型整理柜
Strengthening type cabinet

产品编号 Product NO.	NC06906
产品尺寸 Product size	1000L × 600D × 1800H
描述 Description	标配方孔板、搁板 Formula hole plate, shelf



加强型整理柜
Strengthening type cabinet

产品编号 Product NO.	NC06907
产品尺寸 Product size	1000L × 600D × 1800H
描述 Description	标配方孔板、百叶板 Formula hole plate, blinds



加强型整理柜
Strengthening type cabinet

产品编号 Product NO.	NC06908
产品尺寸 Product size	1000L × 600D × 1800H
描述 Description	标配百叶板、方孔板 Blinds, formula hole plate

防静电加强型整理柜

Antistatic strengthening type cabinet



加强型整理柜
Strengthening type cabinet

产品编号 Product NO.	NC07001
产品尺寸 Product size	1000L × 600D × 1800H
描述 Description	标配搁板 Shelf



加强型整理柜
Strengthening type cabinet

产品编号 Product NO.	NC07002
产品尺寸 Product size	1000L × 600D × 1800H
描述 Description	标配搁板、抽屉 Shelf, drawer



加强型整理柜
Strengthening type cabinet

产品编号 Product NO.	NC07003
产品尺寸 Product size	1000L × 600D × 1800H
描述 Description	标配搁板、抽屉 Shelf, drawer



加强型整理柜
Strengthening type cabinet

产品编号 Product NO.	NC07006
产品尺寸 Product size	1000L × 600D × 1800H
描述 Description	标配搁板、抽屉、单门 Shelf, drawer, single door



加强型整理柜
Strengthening type cabinet

产品编号 Product NO.	NC07007
产品尺寸 Product size	1000L × 600D × 1800H
描述 Description	标配搁板、方孔板 Shelf, formula hole plate



加强型整理柜
Strengthening type cabinet

产品编号 Product NO.	NC07008
产品尺寸 Product size	1000L × 600D × 1800H
描述 Description	玻璃门，标配搁板 Glass door, shelf



加强型整理柜
Strengthening type cabinet

产品编号 Product NO.	NC07010
产品尺寸 Product size	1000L × 600D × 1800H
描述 Description	标配方孔板、百叶板、抽屉 Formula hole plate, blinds, drawer



加强型整理柜
Strengthening type cabinet

产品编号 Product NO.	NC07011
产品尺寸 Product size	1000L × 600D × 1800H
描述 Description	标配搁板、抽屉 Shelf, drawer



加强型整理柜
Strengthening type cabinet

产品编号 Product NO.	NC07012
产品尺寸 Product size	1000L × 600D × 1800H
描述 Description	标配搁板、抽屉 Shelf, drawer

防静电流利条货架

Antistatic flow rack

- 选用优质冷轧钢通过冷弯成型工艺制作，结构简单，节约空间，外形美观
- 货架立柱与横梁采用插接组合方式，每层承重300kg，靠自重锁紧，安装拆卸简单方便
- 表面防静电烤漆，本身摩擦不起电，能安全有效缓解静电释放过程，防静电性能： $<1 \times 10^9 \Omega$
- 立柱与横梁材料厚度均为1.5mm，流利条选用优质铝合金支架导电滚轮，滑动自如，满足产线物料先进先出提高效率的需求
- High quality cold rolling steel is made by cold bending process. It has simple structure, space saving and beautiful appearance.
- The shelf column and beam are connected and combined, each layer weighs 300kg, and is locked by self weight. It is simple and convenient to install and disassemble.
- The surface antistatic paint, which does not wear electricity, can safely and effectively relieve the electrostatic release process, antistatic performance: $<1 \times 10^9 \Omega$
- The thickness of column and crossbeam material is 1.5mm, and the fluency bar is made of high quality aluminum alloy bracket and conductive roller, which can slide freely and meet the needs of first line, first out and efficiency improvement of production line.



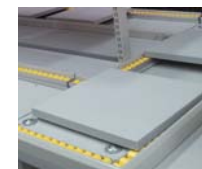
技术参数 Technical data

产品编号 Product NO.	NCR51252	NCR51552	NCR51852	NCR51262	NCR51562	NCR51862	NCR61252	NCR61552	NCR61852	NCR61262	NCR61562	NCR61862
每层流利条数量 Fluency per layer	12	15	18	12	15	18	12	15	18	12	15	18
每层承重(kg) Load per layer	100	100	100	100	100	100	300	300	300	300	300	300
防静电性能 ESD property	$1 \times 10^9 \sim 1 \times 10^{10} \Omega$											
环境温度、湿度 Ambient T & RH	T: 10~35°C RH: 15~75%											
外形尺寸 Shape size (mm)	长L 500	1500	1800	1200	1500	1800	1200	1500	1800	1200	1500	1800
宽W/D	500	500	500	600	600	600	500	500	500	600	600	600
高H	2000	2000	2000	2000	2000	2000	2000	2000	2000	2000	2000	2000

防静电柔性化传输单元

Antistatic attic stereoscopic rack

- 模块化设计，适应不同生产需求，任意调整传输路径和方式
- 低成本运行，低成本改造，灵活易动，优化生产，满足各种产品级零部件组装生产
- 可以配置独立的照明系统，独立静电防护管控系统，线路插接方便，维护简单
- 表面防静电烤漆，本身摩擦不起电，能安全有效缓解静电释放过程，防静电性能： $<1 \times 10^9 \Omega$
- 广泛应用于微电子组装、移动终端设备装配等，根据现场实际需求独立设计，充分利用场地，提升工作效率
- Modular design adapts to different production requirements and adjusts the transmission path and mode arbitrarily.
- Low cost, low cost optimization transformation, flexible production, easy to move, to meet a variety of product assembly production.
- It can be equipped with independent lighting system, independent electrostatic protection and control system, easy to connect line and simple maintenance.
- The surface antistatic paint, which does not wear electricity, can safely and effectively relieve the electrostatic release process, antistatic performance: $<1 \times 10^9 \Omega$
- It is widely used in microelectronic assembly, assembly of mobile terminal equipment and so on. It is designed independently according to the actual needs of the field, making full use of the site and improving the efficiency of work.



技术参数 Technical data

产品编号 Product NO.	NCR71235	NCR71535	NCR71835	NCR71245	NCR71545	NCR71845	NCR71255	NCR71555	NCR71855	NCR71265	NCR71565	NCR71865
每层流利条数量 Fluency per layer	12	15	18	12	15	18	12	15	18	12	15	18
均匀承重(kg) Uniform load bearing	300	300	300	300	300	300	300	300	300	300	300	300
防静电性能 ESD property	$1 \times 10^9 \sim 1 \times 10^{10} \Omega$											
环境温度、湿度 Ambient T & RH	T: 10~35°C RH: 15~75%											
外形尺寸 Shape size (mm)	长L 1200	1530	1830	1200	1500	1800	1200	1500	1800	1200	1500	1800
宽W/D	300	300	300	400	400	400	500	500	500	600	600	600
高H	50	50	50	50	50	50	50	50	50	50	50	50

防静电仓储货架 Antistatic storage rack

- 选用优质冷轧钢通过冷弯成型工艺制作，结构简单，外形美观
- 货架立柱与横梁采用插接组合方式，靠自重锁紧，安装拆卸简单方便
- 表面防静电烤漆，本身摩擦不起电，能安全有效缓解静电释放过程，防静电性能： $< 1 \times 10^9 \Omega$
- 立柱与横梁材料厚度均为1.5mm，钢制层板材料厚度均为0.8mm，层板也可选用整体防静电搁板
- High quality cold rolling steel is made by cold bending process. The structure is simple and the shape is beautiful.
- The shelf column and the cross beam are connected and combined by the way of self weight locking, and the installation and disassembly are simple and convenient.
- The surface antistatic paint, which does not wear electricity, can safely and effectively relieve the electrostatic release process, antistatic performance: $< 1 \times 10^9 \Omega$
- The thickness of the material of the column and the beam is 1.5mm, the thickness of the steel laminates is 0.8mm, and the laminates can also be used as a whole antistatic shelf.



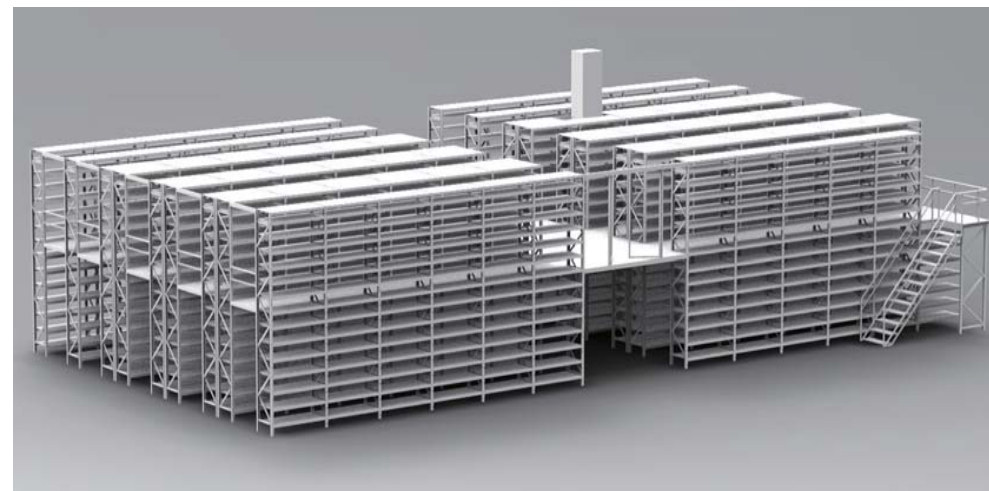
技术参数 Technical data

产品编号 Product NO.	NCR01252	NCR01552	NCR01852	NCR01262	NCR01562	NCR01862	NCR11252	NCR11552	NCR11852	NCR11262	NCR11562	NCR11862
搁板层数 shelves	5	5	5	5	5	5	5	5	5	5	5	5
每层承重(kg) Load per layer	100	100	100	100	100	100	300	300	300	300	300	300
防静电性能 ESD property	$1 \times 10^9 \sim 1 \times 10^{10} \Omega$											
环境温度、湿度 Ambient T & RH	T: 10~35°C RH: 15~75%											
外形尺寸 Shape size (mm)	长L 1200	1500	1800	1200	1500	1800	1200	1500	1800	1200	1500	1800
宽W/D	500	500	500	600	600	600	500	500	500	600	600	600
高H	2000	2000	2000	2000	2000	2000	2000	2000	2000	2000	2000	2000



防静电阁楼立体货架 Antistatic attic stereoscopic rack

- 阁楼立体货架以货架为主结构体，配合楼面及楼板梁构成平台或多层货架组合
- 采用互扣的连接方式，确保楼面与楼板梁之间锁定，具有精度高、表面平整、承载能力强等优势
- 可以配置独立的照明系统，提升下层楼面亮度，方便货物存取管理
- 人性化设计，楼层间距通常为2.2m~2.7m，充分考虑人机操作的便利性，顶层货架高度一般为2.5m左右
- 表面防静电烤漆，本身摩擦不起电，能安全有效缓解静电释放过程，防静电性能： $< 1 \times 10^9 \Omega$
- 广泛应用于汽车、电子、微电子、轻工等领域，根据现场实际需求独立设计，充分利用场地，提升仓储空间
- The attic stereoscopic shelf is based on the shelf – based structure, which is combined with the floor slab and floor beam to form a platform or multi storey shelf.
- The interlocking method ensures the lock between the floor slab and the slab beam, and has the advantages of high precision, smooth surface and strong bearing capacity.
- An independent lighting system can be configured to enhance the brightness of the lower floor and facilitate the access and management of the goods.
- Humanized design, the floor space is usually 2.2m~2.7m, fully consider the convenience of man-machine operation, the top shelf height is generally about 2.5m.
- The surface antistatic paint, which does not wear electricity, can safely and effectively relieve the electrostatic release process, antistatic performance: $< 1 \times 10^9 \Omega$
- It is widely used in automotive, electronic, microelectronics, light industry and other fields, according to the actual needs of the site design, full use of the site to improve storage space.



防静电注塑周转箱

Anti static injection turnover box

- 以聚丙烯（PP）为基材，添加自主研发的改性导电塑料辅材，保留原有较强的机械性能的同时提升材料的静电导泄性能
- 摩擦不起静电，能安全有效缓解静电释放过程，防静电性能： $<1 \times 10^9 \Omega$
- 产品具有坚韧耐磨、防潮防腐、隔热等作用，大量用于生产过程中电子器件的周转、包装和运输
- PP as the substrate, conductive plastic material to add the independent research and development, to retain the original mechanical performance of strong and improve material performance static discharge.
- It is safe and effective to relieve the static release of static electricity, antistatic performance: $<1 \times 10^9 \Omega$
- The products have the functions of tough, wear-resistant, moistureproof and antiseptic, heat insulation and so on. It is widely used in the turnover, packaging and transportation of electronic devices in the process of production.



产品编号 Product NO.	外尺寸/内尺寸 Outer size / inner size	产品编号 Product NO.	产品编号 Product NO.
NCZ07501	360×270×135mm/320×240×125mm	NCZ07514	610×415×245mm/580×380×240mm (可配盖)
NCZ07502	380×240×105mm/340×220×90mm	NCZ07515	600×500×167mm/560×460×160mm
NCZ07503	420×310×155mm/380×280×145mm (可配盖)	NCZ07516	580×370×200mm/535×344×193mm (可配盖)
NCZ07504	500×360×175mm/470×330×165mm	NCZ07517	580×370×160mm/535×344×152mm (可配盖)
NCZ07505	565×420×240mm/510×390×235mm (可配盖)	NCZ07518	615×425×155mm/585×390×145mm (可配盖)
NCZ07506	565×420×300mm/510×390×290mm (可配盖)	NCZ07519	620×425×320mm/580×395×310mm (可配盖)
NCZ07507	600×500×150mm/560×455×140mm (可配盖)	NCZ07520	720×450×180mm/680×420×175mm
NCZ07508	600×500×300mm/560×455×290mm (可配盖)	NCZ07521	720×560×380mm/675×515×370mm
NCZ07509	600×500×360mm/560×460×355mm (可配盖)	NCZ07522	615×430×120mm/555×373×118mm (可配盖)
NCZ07510	670×410×160mm/620×370×150mm	NCZ07523	560×430×145mm/515×350×140mm
NCZ07511	565×420×380mm/510×390×375mm (可配盖)	NCZ07524	585×405×175mm/538×360×170mm
NCZ07512	510×345×185mm/464×300×175mm	NCZ07525	530×370×205mm/490×330×200mm
NCZ07513	610×500×400mm/560×455×395mm (可配盖)	NCZ07526	620×430×200mm/580×385×195mm (可配盖)

防静电中空板周转箱

Antistatic hollow board turnover box

- 可任意裁切制作各种尺寸需求的周转箱
- 具有质轻、坚韧、经济等特点，板材厚度：2mm、3mm、4mm、5mm、6mm
- 防静电性能： $<1 \times 10^9 \Omega$
- A turnaround box for various sizes can be made at any cut.
- With the characteristics of light quality, tough, economic and so on, plate thickness: 2mm, 3mm, 4mm, 5mm, 6mm
- Antistatic performance: $<1 \times 10^9 \Omega$



防静电SMT上下料架

Antistatic SMT rack

- 标准料架的耐热温度85℃，基准位置（A=34mm，B=34mm）
- 侧面导向槽，槽深3.5mm，槽宽5mm，槽间距10mm
- 防静电性能： $<1 \times 10^9 \Omega$
- Metal plate is selected for the bottom plate. The heat resistance temperature is 85 °C, the reference position (A=34mm, B=34mm)
- Side direction groove, groove depth 3.5mm, slot width 5mm, slot spacing 10mm
- Antistatic performance: $<1 \times 10^9 \Omega$



技术参数 Technical data

产品编号 Product NO.	NCS07601	NCS07602	NCS07603	NCS07604	NCS07605	NCS07606	NCS07607	NCS07608	NCS07609	NCS07610	NCS07611	NCS07612
底板材料 Base material	金属板 Metal	塑胶板 Plastic	金属板 Metal	塑胶板 Plastic	金属板 Metal	金属板 Metal	金属板 Metal	金属板 Metal	塑胶板 Plastic	金属板 Metal	金属板 Metal	金属板 Metal
侧板结构 Side board structure	整板 Whole panel				拼板 Combined panel							
侧板材质 Side board material	塑胶 Plastic											
调节方式 Regulation mode	齿轮轨道调节 Gear track adjustment		螺丝调节 Screw adjustment		齿轮轨道调节 Gear track adjustment				螺丝调节 Screw adjustment		螺杆传动调节 Screw driven adjustment	
可调节宽度 Adjustable Width	50-250	50-250	50-250	80-250	50-250	50-330	50-250	50-250	90-250	50-250	50-250	50-460
外形尺寸 Shape size (mm)	长L	355	355	355	355	400	460	460	355	375	355	535
	宽W/D	320	320	320	315	320	400	320	320	320	320	530
	高H	563	563	563	580	563	563	563	563	563	563	563

防静电PCB周转车

Antistatic PCB turnover cart



技术参数 Technical data

产品编号 Product NO.	NCS07615	NCS07616	NCS07617	NCS07618
防静电性能 ESD property	$<1 \times 10^9 \Omega$			
槽板宽度 Panel width	355	460	355	460
存放数量 Storage QTY	300			
槽板材质 Panel material quality	塑料 Plastic	塑料 Plastic	不锈钢 Stainless steel	不锈钢 Stainless steel
外形尺寸 Shape size	长L	850	850	900
	宽W/D	550	550	540
	高H	1390	1390	1300
应用描述 Application description	用于存放周转PCB板，装配电脚轮 It is used to store the turnover PCB board and assemble the conductive casters.			

静电防护用品 Electrostatic protective equipment

- 在静电防护区域里，人员是极为主要的静电源，随着人员不停的活动，各种摩擦产生大量的静电需要安全释放
- 接触静电敏感器件之前，人员必须先消除静电或者确保自身接地可靠、安全
- 根据静电防护区域环境的不同，选着不同的防静电衣帽和鞋子，特定岗位还需穿戴防静电手套
- In the electrostatic protection area, the personnel are the most important static power. With the continuous activity of the personnel, a large amount of static electricity needs to be released safely.
- Before the electrostatic sensitive device is touched, the personnel must first remove the static electricity or ensure that their grounding is reliable and safe.
- According to the different electrostatic protection area environment, choose different anti static clothes hat and shoes, special posts need to wear antistatic gloves.



产品编号 | Product NO. NCY07781



产品编号 | Product NO. NCY07701



NCY07702



NCY07703



NCY07704



产品编号 | Product NO. NCY07761



NCY07762



NCY07763



NCY07771



NCY07782



NCY07783



NCY07791



NCY07792



静电防护用品 Electrostatic protective equipment

防静电接地插座 | Anti-static grounding socket



产品编号 | Product NO. NCY07801



NCY07802

防静电手腕带 | Anti-static wrist strap



产品编号 | Product NO. NCY07811



NCY07812

防静电接地扣 | Anti-static earthing buckle



产品编号 | Product NO. NCY07821



NCY07822



防静电毛刷 | Anti-static brush



产品编号 | Product NO. NCY07831

防静电镊子 | Anti-static tweezers



产品编号 | Product NO. NCY07851

静电防护警示胶带 | Electrostatic guard tape



产品编号 | Product NO. NCY07861

静电防护区域警示标牌 | EPA warning sign



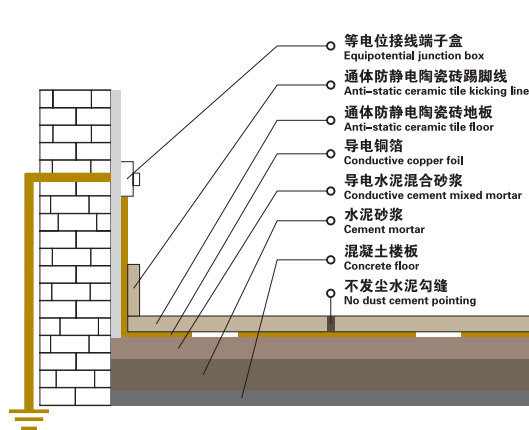
产品编号 | Product NO. NCY07871



通体防静电陶瓷砖地板

Anti-static ceramic tile floor

- 通体防静电陶瓷砖是一种新型的防静电产品，具有长效防静电、不发尘、防火（A级）、防滑、耐磨、耐腐、抗污能力强等特点
- 采用高科技复合技术，将导电性成分与陶瓷相结合，在陶瓷中形成连续的静电释放通道
- 其美观耐用，是一种具有高档艺术装饰效果的功能性陶瓷地板
- 将防静电陶瓷地板与配套研发的导电水泥砂浆、交叉接地铜箔、接地连接等工艺方法铺贴在平整地面上，构建完整的地面静电防护系统
- 广泛应用于电子生产、航空航天、石油化工、医院、医药、生物等领域
- Anti static ceramic tile is a new type of antistatic product. It has the characteristics of long-acting antistatic, no dust, fire protection (Grade A), anti slip, abrasion resistance, corrosion resistance and strong antifouling ability.
- A high tech composite technology is used to combine the conductive components with the ceramics to form a continuous electrostatic release channel in the ceramics.
- Its beautiful and durable, a functional ceramic floor with high artistic decoration effect
- The anti-static ceramic floor and the developed conductive cement mortar, cross grounding copper foil, grounding connection and other process methods are paved on the leveled ground to form a complete surface electrostatic protection system. It is widely used in the fields of electronic production, aerospace, petrochemical, hospital, medicine, biology and other fields.



施工要求

Construction requirements

现场温度都不低于15℃，基础地面清洁、无起砂、平整，预留防静电接地装置

The temperature of the field is not less than 15 C, the ground floor is clean, the sand is free, and the anti static grounding device is reserved.

施工工艺

Construction technology

清扫地面 — 铺设水泥砂浆 — 铺设导电水泥混合砂浆 — 铺设导电铜箔 — 铺贴通体防静电陶瓷砖地板 — 不发尘水泥勾缝

— 表面清洁 — 检测性能

Sweep the ground — Laying cement mortar — Laying of conductive cement mixed mortar — Laying conductive copper foil

— Paving anti static ceramic tile floor — No dust cement pointing — Surface cleanliness — Detection performance



防静电地面材料技术性能比较

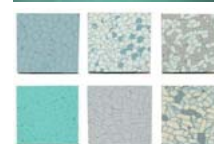
Comparison of technical performance of anti static ground materials



产品序号 | Serial number: NC08801
聚氨酯及环氧自流平地面
Polyurethane and epoxy self leveling ground



产品序号 | Serial number: NC08802
防静电橡胶地板
Anti-static rubber floor



产品序号 | Serial number: NC08803
防静电PVC地板
Anti-static PVC floor



产品序号 | Serial number: NC08804
防静电水磨石地板
Antistatic terrazzo floor



产品序号 | Serial number: NC08805
通体防静电陶瓷砖地板
Anti-static ceramic tile floor



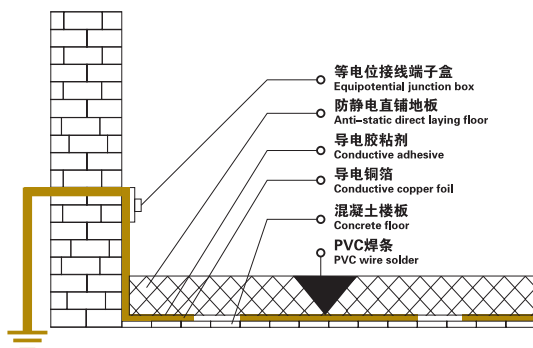
技术性能比较 Comparison of technical performance

产品序号 Serial number	主要应用领域 Main application fields	施工特点 Construction characteristics	防火性能 Fire resistance	防静电性能有效期 Effective period of antistatic performance
NC08801	电子生产车间、洁净厂房、医院手术室 Electronic production workshop, clean workshop, hospital operation room	施工复杂，周期长，施工完成48小时后可行走，72小时后可行车 The construction is complex and the cycle is long. It can walk after 48 hours of construction and can drive after 72 hours.	B	0.5mm 5年 5year 1.0mm 8年 8year 2.0mm 10年 10year 3.0mm 15年 15year
NC08802	电子生产车间、集成电路生产车间、交换设备生产车间 Electronic production workshop, integrated circuit production workshop, exchange equipment workshop	施工简单，周期短，施工完成48小时后可正常使用 The construction is simple, the cycle is short, and it can be used normally after 48 hours of construction.	B	3年 3year
NC08803	电子生产车间、洁净车间、集成电路生产厂房 Electronic production workshop, clean workshop, integrated circuit production plant	施工简单，周期短，施工完成24小时后可正常使用 The construction is simple, the cycle is short, and it can be used normally after 24 hours of construction.	B	10年 10year
NC08804	火工、石油、飞机修理厂、跑道、制药厂 Pyrotechnics, oil, aircraft repair plants, runways, pharmaceutical factories	施工简单，周期短，易起尘，对施工地面要求高 The construction is simple, the period is short, the dust is easy to rise, and the requirements for the construction ground are high.	A	长效 Long term
NC08805	电子生产车间、洁净车间、大规模集成电路生产车间、电信机房 Electronic production workshop, clean workshop, large-scale integrated circuit production workshop, telecommunication machine room	施工复杂，周期长，不易起尘，承重性能高 The construction is simple, the period is short, the dust is easy to rise, and the requirements for the construction ground are high.	A	长效 Long term

以上表格仅供参考，根据实际需求选定所需使用的材料及施工方案
The above table is for reference only. The materials used and the construction plan are determined according to the actual needs.

防静电直铺地板 Anti-static direct laying floor

- 防静电直铺地板分为防静电PVC地板和防静电橡胶地板，均具有极好的耐磨、防水和防化学反应特性
- 导电材料均匀分布于整块地板，具有良好的防静电性能(静电导泄型 $1 \times 10^4 \sim 1 \times 10^6 \Omega$ ；静电耗散型 $1 \times 10^6 \sim 1 \times 10^9 \Omega$)，静电耗散能力强
- 材料通体一致，美观实用，颜色持久稳定，防火阻燃性能好
- 片材规格：600 × 600 × 2mm、600 × 600 × 3mm；卷材规格：1.2m × 10m × 2mm、1.2m × 10m × 3mm
- 广泛应用于电子生产、航天航空、石油化工、医院、医药、生物等领域
- Anti static PVC floor is divided into antistatic floor and antistatic rubber floor, which have excellent wear resistance, waterproof and chemical resistance.
- The conductive material is evenly distributed on the whole floor, and has good antistatic performance. The electrostatic conduction and drain type is $1 \times 10^4 \sim 1 \times 10^6 \Omega$, and the static dissipation is $1 \times 10^6 \sim 1 \times 10^9 \Omega$, which has strong static dissipation capacity.
- The materials are consistent in body, beautiful and practical, durable and stable in color, and good in fireproof and flame retardancy.
- Sheet specifications: 600 × 600 × 2mm, 600 × 600 × 3mm, rolling material specifications: 1.2m × 10m × 2mm, 1.2m × 10m × 3mm
- It is widely used in the fields of electronic production, aerospace, petrochemical, hospital, medicine, biology and other fields.

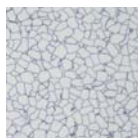


施工要求 Construction requirements

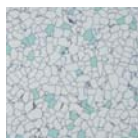
现场温度都不低于15℃，基础地面清洁、无起砂、平整，预留防静电接地装置
The temperature of the field is not less than 15 C, the ground floor is clean, the sand is free, and the anti static grounding device is reserved.

施工工艺 Construction technology

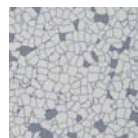
清扫地面—铺设导电网—引出接地线—涂刷导电胶—铺贴地板—拼缝热焊修平—表面清洁—检测验收
Clean the floor — Conductive net — Laying ground leads — Coating conductive adhesive — Paving the floor — Seam heat welding repair flat — Surface cleaning — Acceptance test



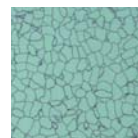
产品编号 | Product NO.
NC08101



产品编号 | Product NO.
NC08102



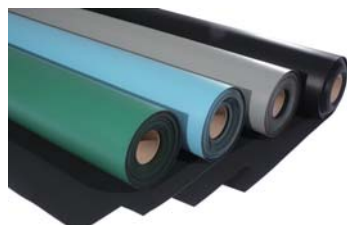
产品编号 | Product NO.
NC08103



产品编号 | Product NO.
NC08104



产品编号 | Product NO.
NC08105

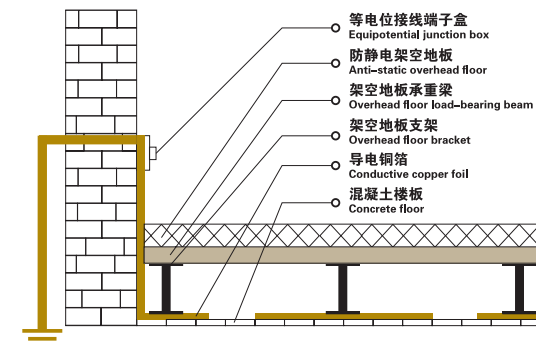


防静电橡胶地板 | Anti-static rubber floor



防静电架空地板 Anti-static overhead floor

- 防静电架空地板的基材有钢基、铝基、复合基、刨花板基（木基）、硫酸钙基等
- 防静电架空地板的贴面材料有防静电瓷砖、三聚氰胺板（HPL）、PVC板等
- 导电材料均匀分布于整块地板，具有良好的防静电性能(静电导泄型 $1 \times 10^4 \sim 1 \times 10^6 \Omega$ ；静电耗散型 $1 \times 10^6 \sim 1 \times 10^9 \Omega$)，静电耗散能力强
- 美观实用，高承载（均布载荷1600kg/平方米以上），防火阻燃性能好，地板规格：600 × 600 × 30mm
- 广泛应用于电子生产、航天航空、石油化工、医院、医药、生物等领域
- The base material of anti static overhead floor has steel base, aluminum base, composite base, particleboard base (wood base), calcium sulfate and so on
- Anti static floor surface materials have anti static ceramic tiles, melamine board (HPL), PVC board and so on
- The conductive material is evenly distributed on the whole floor, and has good antistatic performance. The electrostatic conduction and drain type is $1 \times 10^4 \sim 1 \times 10^6 \Omega$, and the static dissipation is $1 \times 10^6 \sim 1 \times 10^9 \Omega$, which has strong static dissipation capacity.
- Beautiful and practical, high load (more than 1600kg/ square meters load), good fire retardant and flame retardancy, floor size: 600 × 600 × 30mm
- It is widely used in the fields of electronic production, aerospace, petrochemical, hospital, medicine, biology and other fields.

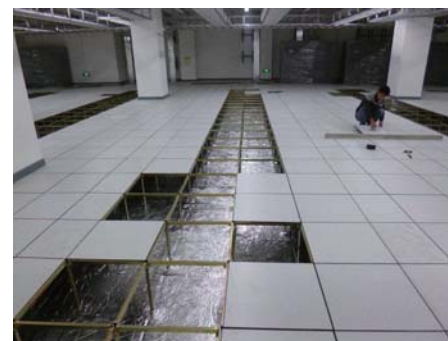


施工要求 Construction requirements

现场温度都不低于15℃，基础地面清洁、无起砂、平整，预留防静电接地装置
The temperature of the field is not less than 15 C, the ground floor is clean, the sand is free, and the anti static grounding device is reserved.

施工工艺 Construction technology

清扫地面—铺设导电网—引出接地线—搭设支架与承重梁—铺设地板—表面清洁—检测验收
Clean the floor — Conductive net — Laying ground leads — Erection of stents and load-bearing beams — Laying the floor — Surface cleaning — Acceptance test



焊锡烟雾净化器 Solder smog purifier

- 全新进风分流通式设计让有害颗粒物和有害气体能更充分更均衡的接触HEPA和活性炭滤芯，让滤芯有效吸收
- 多重过滤，空气室内循环，快速净化，300纳米污染物净化率99.99%
- 选用进口电机，降噪结构设计，最高档位开启也仅仅只有52分贝，让我们的工作环境净中有静
- 初、中、高效滤芯可独立更换，最大限度利用滤芯，降低使用成本
- 万向吸烟臂可任意调整方位，适用于手工焊锡、机器人自动焊锡、小型锡炉、激光打标等易产生烟雾的工艺
- The new inlet design allows the harmful particles and harmful gases to be more fully and more balanced to contact HEPA and active carbon filter, so that the filter core can be absorbed effectively.
- Multiple filtration, indoor air circulation, rapid purification, 300 nanoscale pollutants purification rate 99.99%
- Selection of imported motor, noise reduction structure design, the most upscale position is only 52 decibels, let our working environment have a quiet net
- The initial, middle and high efficiency filter core can be replaced independently, the maximum use of filter core, reduce the cost of use
- The universal arm can adjust the range of smoking, suitable for manual welding, automatic soldering robot, small tin furnace, such as laser marking process is easy to produce smoke.



产品编号 | Product NO. NCW08301



技术参数 Technical data

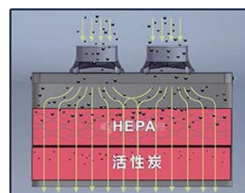
产品编号 Product NO.	NCW08301	NCW08302
额定电压 Rated voltage	110/220V	110/220V
单口风速 Wind speed	17m/s	11m/s
管臂内径 Internal diameter	75mm	75mm
空气流量 Air flow	235m³/h	235m³/h
负压 Negative pressure	2000Pa	2200Pa
外形尺寸 Shape size	长L 250 宽W/D 250 高H 410	长L 425 宽W/D 250 高H 410



产品编号 | Product NO. NCW08302

滤芯说明 Filter cartridge

产品编号 Product NO.	产品名称 Product name	功能描述 Functional description	使用周期 Lifetime
NCW08301	初效过滤棉 First effect filter cotton	加厚纤维材质，吸附大颗粒物 Thickened fiber material, adsorb large particles.	1周-2个月 1 weeks - 2 months
NCW08302	PP中效过滤棉 PP medium filter cotton	灌胶密封，避免漏烟，容尘量大 Sealant seal, avoid leakage of smoke, large amount of dust.	3-5个月 3-5 months
NCW08303	玻纤中效过滤棉 Glass fiber medium filter cotton	有效过滤空气中穿透力强的小至0.3um微粒 Small 0.3um particles effectively filter the air penetrating	3-5个月 3-5 months
NCW08304	活性炭除味滤芯 Active carbon filter core	纳米级复合分子筛，有效吸附有毒有害气体 Nanoscale composite molecular sieve to effectively adsorb toxic and harmful gases	6-12个月 6-12 months



焊锡烟雾净化系统工程 Soldering tin smoke purification system engineering

- 根据大楼的结构特点，就近开设风井，划分排风和补风系统
- 排风和补风系统达到风量平衡，保持室内-5Pa~-10Pa的负压，防止有害气体的散逸，保证一线人员的身体健康
- 采用智能变频控制系统，节能降噪，实现夏天补冷风、冬天补暖风，维持室内温度的舒适性
- 设备进风口处设有阻火器，阻留放电火花，利用重力吸收粗粒尘埃，微粒尘埃被滤芯吸收，再经过活性炭过滤净化达标后排出
- 万向吸烟臂可任意调整方位，适用于易产生烟雾的手工焊锡产线、机器人自动焊锡流水线、流水线激光打标等场所
- According to the structural characteristics of the building, the nearest open air shaft, exhaust system and air division.
- Exhaust and ventilation system to keep indoor air balance, negative pressure -5Pa~-10Pa, prevent the harmful gases escape, ensure the health of staff.
- The intelligent frequency conversion control system is adopted to save energy and reduce the noise, achieve the summer cooling wind and winter heating, and maintain the comfort of the indoor temperature.
- The device is equipped with a flame arrester at the inlet, retaining the discharge sparks, absorbing the coarse particles with gravity, and absorbing the particulate dust from the filter element. After activated carbon filtration, it is discharged after reaching the standard.
- The universal smoking arm can be adjusted at any direction, which is suitable for the manual solder production line, robot automatic tin production line, pipeline laser marking, etc., which is easy to generate smoke.



辊筒输送线 Roller conveyor line

- 依据现场实际需求合理化布局设计，多条辊筒线便于组合形成复杂的输送系统，完成多方面生产工艺要求
- 按需生产制作，轻松实现物料输送，可靠性高，维护方便
- 滚道线内常用宽度有200mm、300mm、400mm、500mm、600mm等
- 转弯滚道标准转弯半径为300mm、600mm、900mm、1200mm等
- 直段辊筒常用的辊筒直径有38mm、50mm、60mm等
- The layout design is rationalized according to the actual needs of the field, and many roller lines are easy to combine to form a complex conveying system and complete the production process requirements in many aspects.
- Production on demand, easy to realize material delivery, high reliability, convenient maintenance
- The commonly used width in the raceway is 200mm, 300mm, 400mm, 500mm, 600mm and so on
- The internal radius of the standard turning of the turning raceway is 300mm, 600mm, 900mm, 1200mm and so on
- The diameter of the roller is 38mm, 50mm, 60mm and so on.



防静电皮带输送线 Antistatic belt conveyor

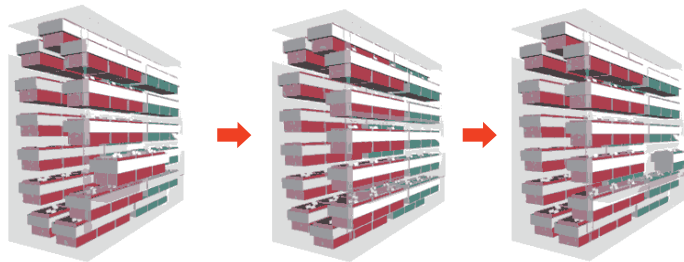
- 选用优质防静电皮带，结构简单、可靠性高便于维护，可依据用户现场实际需要定制
- 输送平稳，物料与输送带间无相对运动，有效避免物料受损
- 选用进口高品质电机，无噪音，适合于工作环境要求比较安静的场合
- 准输送带常用宽度范围为200mm~1200mm之间
- 转弯皮带机准转弯半径为600mm、900mm等
- Selection of high quality anti static belt, simple structure, high reliability and easy to maintain, can be customized according to the actual needs of the user.
- Smooth transportation, no relative motion between material and conveyor belt, effectively avoid material damage
- Selection of imported high quality motor, no noise, suitable for a quiet situation in the working environment.
- The width range of the quasi conveyor belt is between 200mm~1200mm
- The inner radius of the quasi turning of the turning belt machine is 600mm, 900mm and so on



防静电垂直回转自动货架

Antistatic vertical rotary automatic rack

- 由主体框架、可移式箱斗、驱动系统、传动系统、控制系统、安全系统等十几个部分组成
- 通过提取器的升降运动，将存放物料的托盘取出或移至合适的货位
- 入口处自动检测货物高度，以快捷方式将物料存放于最佳库位，全部操作实现自动化存取过程
- 自动、合理的安排库内有效存储空间
- 用于存放电子元器件、半成品、辅料、零件、医疗器材等
- It is composed of more than ten parts of the main frame, the movable box bucket, the driving system, the transmission system, the control system and the security system.
- The lifting movement extractor, material storage trays will be removed or moved to the appropriate location
- The entrance automatically detects the height of the goods and stores the materials in the best repository in a fast way. All operations can achieve automated access process.
- Automatic and reasonable arrangement of effective storage space in the library.
- Used for storage of electronic components, semi-finished products, accessories, parts, medical equipment, etc.



技术参数 Technical data

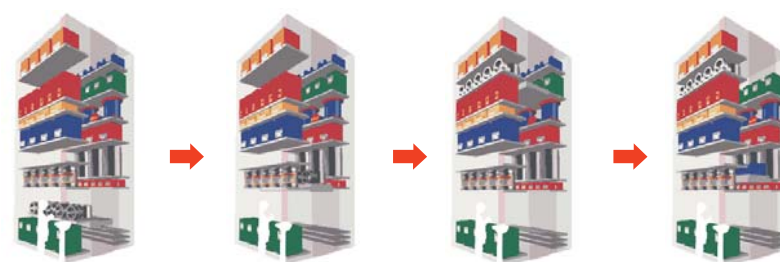
产品编号 Product NO.	NCL21308	NCL21310	NCL21312	NCL21316	NCL21318	NCL22512	NCL22518	NCL22522	NCL22526	NCL22528	NCL22530	NCL22532
料斗数量 Carrier number	8	10	12	16	18	12	18	22	26	28	30	32
单斗承重(kg) Load per carrier	100	100	100	100	100	200	200	200	200	200	200	200
防静电性能 ESD property	1 × 10 ⁶ ~1 × 10 ⁹ Ω											
环境温度、湿度 Ambient T & RH	T: 10~35℃ RH: 15~75%											
料斗尺寸 Carrier size (mm)	长L	2190	2190	2190	2190	2190	2210	2210	2210	2210	2210	2210
	宽W/D	300	300	300	300	300	500	500	500	500	500	500
	高H	280	280	280	280	280	280	280	280	280	280	280
外形尺寸 Shape size (mm)	长L	2775	2775	2775	2775	2775	2785	2785	2785	2785	2785	2785
	宽W/D	1330	1330	1330	1330	1330	1650	1650	1650	1650	1650	1650
	高H	2105	2445	2785	3465	3805	2830	3790	4430	5070	5390	6030



防静电垂直升降自动货架

Antistatic vertical lifting automatic rack

- 以托盘为存储单元的自动化仓储货架设备，高度可依需要定制
- 通过提取器的升降运动，将存放物料的托盘取出或移至合适的货位
- 入口处自动检测货物高度，以快捷方式将物料存放于最佳库位，全部操作实现自动化存取过程
- 自动、合理的安排库内有效存储空间，适合存放尺寸差异较大和形状不规则的物品
- 用于存放电子元器件、半成品、辅料、零件、医疗器材等
- An automated storage rack with a tray as a storage unit, which is highly customizable.
- The lifting movement extractor, material storage trays will be removed or moved to the appropriate location
- The entrance automatically detects the height of the goods and stores the materials in the best repository in a fast way. All operations can achieve automated access process.
- Automatically and reasonably arrange the storage space in the library, which is suitable for storing items with large size difference and irregular shape.
- Used for storage of electronic components, semi-finished products, accessories, parts, medical equipment, etc.



技术参数 Technical data

产品编号 Product NO.	NCL35006	NCL37506	NCL31006	NCL35008	NCL37508	NCL31008	NCL35010	NCL37510	NCL31010	NCL35012	NCL37512	NCL31012
托盘数量 Pallet number	标配20个，可根据需要定制数量 Standard configuration of 20, can be customized according to the number of needs											
单托承重(kg) Load per pallet	500	750	1000	500	750	1000	500	750	1000	500	750	1000
防静电性能 ESD property	1 × 10 ⁶ ~1 × 10 ⁹ Ω											
环境温度、湿度 Ambient T & RH	T: 10~35℃ RH: 15~75%											
托盘尺寸 Pallet size (mm)	长L	2060	2460	3260	2060	3260	2060	2460	3260	2060	2460	3260
	宽W/D	635	635	635	825	825	825	1015	1015	1015	1270	1270
	高H	30	30	30	30	30	30	30	30	30	30	30
外形尺寸 Shape size (mm)	长L	2470	2870	3670	2470	2870	3670	2470	2870	3670	2470	2870
	宽W/D	2290	2290	2290	2900	2900	2900	3475	3475	3475	4240	4240
	高H	6000	6000	6000	6000	6000	6000	6000	6000	6000	6000	6000



静电中和离子风机

Electrostatic neutralization ionizing blower

- 优质钨制电极，更可靠更耐久，实行电晕放电，高频电压产生大量的正负离子，快速中和物体表面所带的电荷
- 离子风机可独立运行，亦可接入静电防护监控系统，实现远程控制与查看
- 出风口配置离子传感器，实时监控静电中和状态
- 运用流体力学原理设计，高效率、大风量快速中和静电
- 主要应用在电子生产线、维修台、电子产品的静电防护区域
- High quality tungsten electrode, more reliable and durable, the practice of corona discharge, high frequency voltage produced a large number of positive and negative ions, quickly neutralizing the charge on the surface of the object.
- The ion fan can operate independently and can also be connected with the electrostatic protection monitoring system to realize remote control and view.
- The air vent is configured with an ion sensor to monitor the static state in real time.
- Based on the principle of hydrodynamics, high efficiency and high air volume and static electricity are used.
- It is mainly used in the electrostatic protection areas of electronic production lines, maintenance stations and electronic products.



微型台式离子风机
Mini-table type ionizing blower
产品编号 | Product NO. NC08901



台式离子风机
Table type ionizing blower
产品编号 | Product NO. NC08902



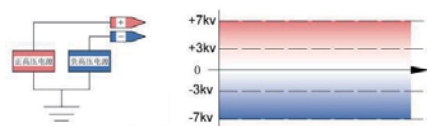
悬挂式双口离子风机
Suspension double outlet ionizing blower
产品编号 | Product NO. NC08905



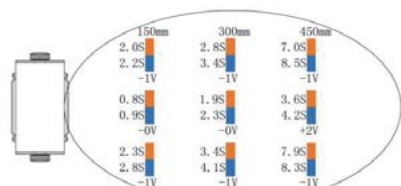
悬挂式三口离子风机
Suspension three outlet ionizing blower
产品编号 | Product NO. NC08906

技术参数 Technical data

产品编号 Product NO.	NC09701	NC09702	NC09705	NC09706
输入电压 Input voltage	110/220V	110/220V	110/220V	110/220V
离子平衡 Ionic equilib	$\leq \pm 10 $	$\leq \pm 10 $	$\leq \pm 10 $	$\leq \pm 10 $
中和速度 Neutralization speed	$\leq 2.5s$	$\leq 2s$	$\leq 3s$	$\leq 3s$
工作范围(mm) Coverage range	450 x 300	750 x 300	900 x 600	1480 x 600
臭氧浓度(ppm) Ozone concentration	≤ 0.01	≤ 0.02	≤ 0.02	≤ 0.02
外形尺寸 Shape size	长L 54 宽W/D 129 高H	180 72 201	640 175 124	1140 175 124



高频直流工作形式 | High frequency DC working form

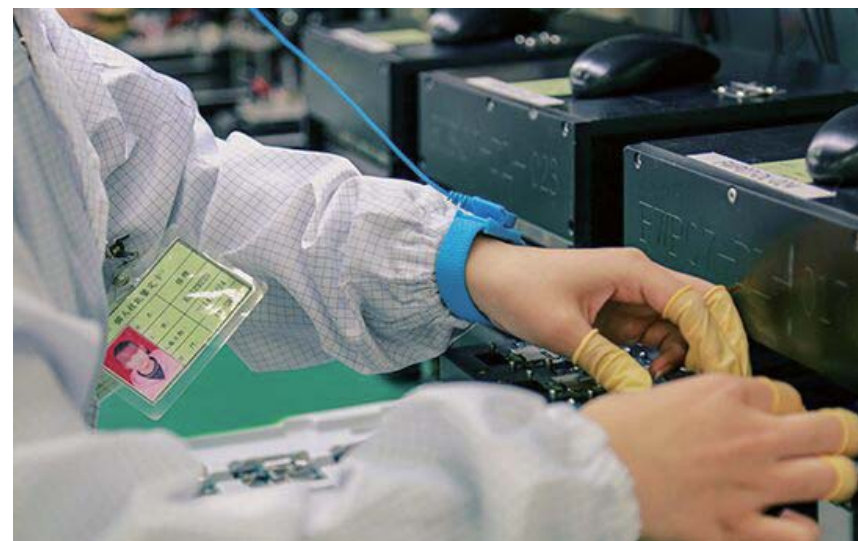
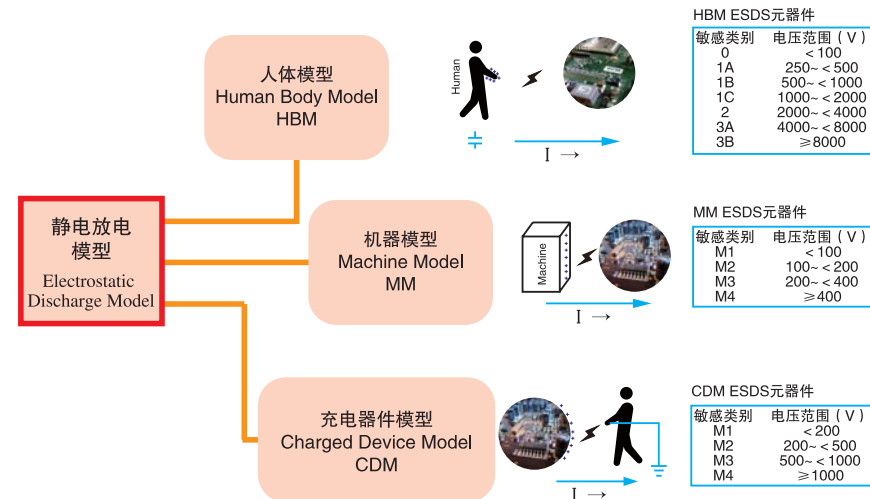


测试仪器 | Test instrument: 3M-711
测试标准 | Test standard: SJ/T10694, GB/T14437
衰减测试 | Attenuation test: $\geq 1000V \sim \leq 100V$
测试环境 | Test environment: RH 30%~50%, T 20°C \pm 5°C

静电放电模型的建立

Establishment of electrostatic discharge model

- 依据GJB3007A、ANSI/ESD S20.20和IEC61340-5-1相关标准，根据EPA现场建立有效的静电放电模型
- 掌握静电放电原理，工作中快速判定静电发生原因，并及时处理有效避免静电带来的危害
- 查验静电敏感器件静电防护等级，规范日常工作管理，细节着手防范静电损害元器件
- Based on the related standards of GJB3007A, ANSI/ESD S20.20 and IEC61340-5-1, effective electrostatic discharge model is established on the basis of EPA.
- Grasp the principle of electrostatic discharge, quickly determine the cause of static electricity, and deal with the harm caused by static electricity in time.
- Check the electrostatic protection level of electrostatic sensitive devices, standardize the management of daily work, and take precautions against electrostatic damage components.



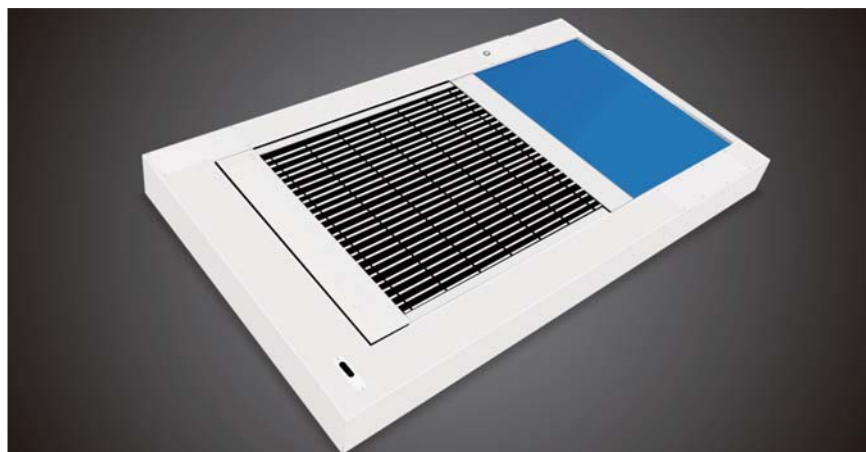
静电释放鞋底清洁机

Sole cleaner with electrostatic release function

- 机身采用304不锈钢钣金成型工艺，毛刷选用耐磨杜邦丝，洁净效果持续保持在99%以上
- 具有静电释放功能，有效降低人体携带的静电
- 同步带平稳运行，超低噪音，内含加强钢丝，增强毛刷寿命
- 配置欧姆龙红外传感器，实现瞬间感应启动，内置漏电、过载、短路保护，设备安全可靠
- 双水泵设置支持持续污水过滤，具有自动补水、排水功能
- 附赠PVA强力吸水海绵，保证鞋底水分快速吸干
- The fuselage adopts 304 stainless steel sheet metal forming process, and the brush selects the wear-resistant DuPont silk, and the cleaning effect is kept over 99%.
- It has the function of electrostatic release, which can effectively reduce the static electricity of the human body.
- Synchronous belt running smoothly, ultra low noise, reinforcing steel wire and reinforcing brush life.
- OMRON infrared sensor is configured to realize instant induction, built-in leakage, overload, short circuit protection, safety and reliability of the equipment.
- Double water pump setting supports continuous sewage filtration and has automatic water supplement and drainage function.
- With PVA super absorbent sponge sole, ensure rapid water drain.

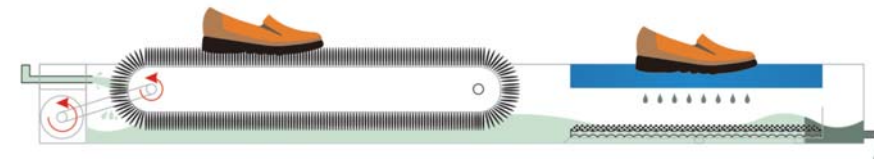
技术参数 Technical data

产品编号 Product NO.	NCL39085	NCL57130	NCL57180	NCL57280
清洗区尺寸 Cleaning area size	480 × 390	860 × 570	1200 × 570	1800 × 570
吸干区尺寸 Dry area size	260 × 390	410 × 570	410 × 570	840 × 570
承载能力 (kg) Load capacity	150	220	400	400
建议人数 Number of people	< 50	< 100	< 150	< 300
运行速度 unning speed	10m/min			
外形尺寸 Shape size (mm)	长L	850	1300	1800
	宽W/D	560	760	760
	高H	130	130	130



静电释放鞋底清洁机

Sole cleaner with electrostatic release function



- 电机带动毛刷使毛刷与鞋底产生相对运动形成摩擦达到清洁鞋底的效果
- 通过水泵抽取干净水喷洗毛刷，从而达到循环清洁的效果
- 所有污渍沿水流方向从另一侧排水口排出，较大的污渍则被提渣篮过滤网拦截，便于手工清除
- PVA强吸水海绵快速吸干鞋底多余水分，地面不留水渍
- The motor drives the brush to produce a relative motion between the brush and the sole to form the effect of friction to reach the clean sole.
- The clean water spray washing brush is extracted by the pump, so as to achieve the effect of circulation cleaning.
- All the stains are discharged from the other side in the direction of water flow, and the larger stains are intercepted by the filter net of the slag basket, which is easy to remove by hand.
- PVA super absorbent sponge quickly sucks the excess moisture from the sole and does not keep water stains on the ground.



人体静电防护综合测试仪

Comprehensive test instrument for human electrostatic protection

- 根据ANSI/ESD S20.20标准, 必须检测人体通过手腕带和防静电鞋接地合格
- 可同时测试手腕带、左鞋、右鞋是否合格; 也可关闭手腕带测试, 只测试防静电鞋
- 可以设置测试上下限阻值以符合不同规范
- 测试时, 应避免长时间工作使得按键机械损坏
- According to the ANSI/ESD S20.20 standard, the human body must be tested to pass the ground through the wrist belt and antistatic shoe.
- Can test the wrist belt, the left shoe, the right shoe to be qualified at the same time; also can close the wrist strap test, only test the antistatic shoe.
- The test upper and lower limits can be set to conform to the different specifications.
- During testing, long time work should be avoided to make the key mechanical damage.



组合编号 | Product NO. NCY19279

产品编号 Product NO.	产品名称 Product name	数量 Qty
NC19275	测试表 (含黄色背板) Test instrument (containing yellow backboard)	1
NC50406	不锈钢脚踏板 (左/右脚独立) Stainless steel treadle (left / right foot independent)	1
NC50405	连接缆线 (连接测试表和脚踏板) Connecting cable (connection test meter and foot pedal)	1
NC19255	重型支架 Heavy bracket	1

静电防护综合测试门禁系统

Comprehensive test entrance guard system for electrostatic protection

- 人体静电防护综合测试结合电子门禁, 加强静电问题管控
- 可以与三辊闸、翼闸通道以及电子门锁等任意结合使用, 测试通过放行或开门
- 可同时测试手腕带、左鞋、右鞋是否合格; 也可关闭手腕带测试, 只测试防静电鞋, 符合国际规范
- 科学的信息化管理, 精确有效, 自动生成完整的ESD测试管理报表
- 系统可独立单机操作或实时联网监控, 测试时间2~3秒, 反应快速避免高峰期拥堵
- The comprehensive test of the human body electrostatic protection combined with the electronic entrance guard to strengthen the control of the static electricity problem.
- It can be used in combination with three roll, wing gate and electronic lock, and the test can be released or opened.
- Can test the wrist belt, left shoe, right shoe to be qualified at the same time; also can close the wrist band test, only test the antistatic shoes, conform to the international standard.
- The scientific information management, accurate and effective, automatically generates a complete ESD test management report.
- The system can be independent single machine operation or real-time network monitoring, test time 2~3 seconds, response quickly avoid peak congestion.



组合编号 | Product NO. NC11108

静电防护综合测试闸机监控系统

Monitoring and control system of static electric protection test brake machine

- 闸机监控系统, 具有安全防范和人员管理功能, 广泛应用于生产车间人员进出管理
- 结合人体静电防护综合测试系统, 有效防范进入静电防护区域的静电危害, 减少静电敏感器件损伤
- 标配读卡器全面兼容各类IC卡、ID卡, 采集的数据资料独立管理, 实时记录
- 软件系统自主研发, 安全可靠, 维护方便, 完整的测试不超过3秒钟, 进入方便快捷
- 单机版不支持测试数据保存功能, 网络版具有测试数据实时保存和查询功能
- The control system of the brake machine has the function of security and personnel management, and is widely used in the management of the workers in the production workshop.
- Combined with the comprehensive test system of human electrostatic protection, it is effective to prevent the static damage to the electrostatic protection area and reduce the damage of the electrostatic sensitive device.
- The card reader is fully compatible with all kinds of IC cards and ID cards, and the data and data collected are managed independently and recorded in real time.
- The software system is independently developed, safe and reliable, easy to maintain, complete test not more than 3 seconds, easy to enter.
- The single machine does not support the test data preservation function, and the network version has the function of real-time storage and query of test data.

单通道闸机
Material box cabinet
组合编号 | Product NO. NCY09401

产品编号 Product NO.	产品名称 Product name	数量 Qty
NCY26121	单翼闸主机 (左) 1200 × 280 × 1000mm Single-blade host (left)	1
NCY26122	单翼闸主机 (右) 1200 × 280 × 1000mm Single-blade host (right)	1
NCY26001	脚踏板 Foot pedal	1

双通道闸机
Material box cabinet
组合编号 | Product NO. NCY09402

产品编号 Product NO.	产品名称 Product name	数量 Qty
NCY26121	单翼闸主机 (左) 1200 × 280 × 1000mm Single-blade host (left)	1
NCY26123	双翼闸主机 (中间) 1200 × 280 × 1000mm Double-blade host (middle)	1
NCY26122	单翼闸主机 (右) 1200 × 280 × 1000mm Single-blade host (right)	1
NCY26001	脚踏板 Foot pedal	2



防静电智能监控器 ESD intelligent multifunctional monitor

- 高端智能集成电路设计，内设TVS静电防护器件，保证产品自身不受静电损坏
- 静电接地线路、人体静电通接地通路实时连续性智能监测
- 实时监测，静电实时安全泄放，静电泄放速度 < 2s，人体静电电压低于10V
- 适用于电子研发实验室、小型电子生产、组装等静电防护区域的使用
- High end intelligent integrated circuit design, set up TVS electrostatic protection device to ensure that the product itself is not damaged by static electricity.
- Real time continuous intelligent monitoring of static grounding circuit and human electrostatic connection ground path.
- Real-time monitoring, real-time electrostatic discharge, electrostatic discharge speed < 2S, human static voltage less than 10V.
- Applicable to electronic R & D laboratories, small electronic production, assembly and other electrostatic protection areas.



组合编号 | Combination NO. NCA97131

技术说明 Technical description

项目 Project	描述 Describe
接地监控 Grounding monitoring	双回路实时监测接地性能，接地出现不良时触发声光报警 Double loop real-time monitoring of grounding performance and sound and light alarm when ground is bad
人体监控 Human monitoring	双触点监测人体电阻状况，人体电阻超出 $10^9\Omega$ 时触发声光报警 Double electric shock monitoring of human resistance, when the resistance of human body is over $10^9\Omega$ triggers the sound and light alarm
静电监控 Electrostatic monitoring	静电电压实时监测，静电电压超出预定值时间超过1s触发声光报警 Real-time electrostatic voltage monitoring, the electrostatic voltage exceeds the predetermined value time exceeding the 1s triggered acoustic-optic alarm
静电泄放 Electrostatic discharge	机身内置电阻 $1M\Omega$ ，接地良好时，实时泄放静电，静电泄放时间 $\leq 0.2s$ Fuselage built-in $1M\Omega$ resistor, good grounding, electrostatic discharge time, electrostatic discharge time is less than 0.2S
机身尺寸 Fuselage size	56 x 30 x 10mm
电源 Power	内置聚合物锂电池 Built-in polymer lithium battery
环境温度 Ambient temperature	-10℃ ~ +60℃
环境湿度 Ambient humidity	0% ~ 90%

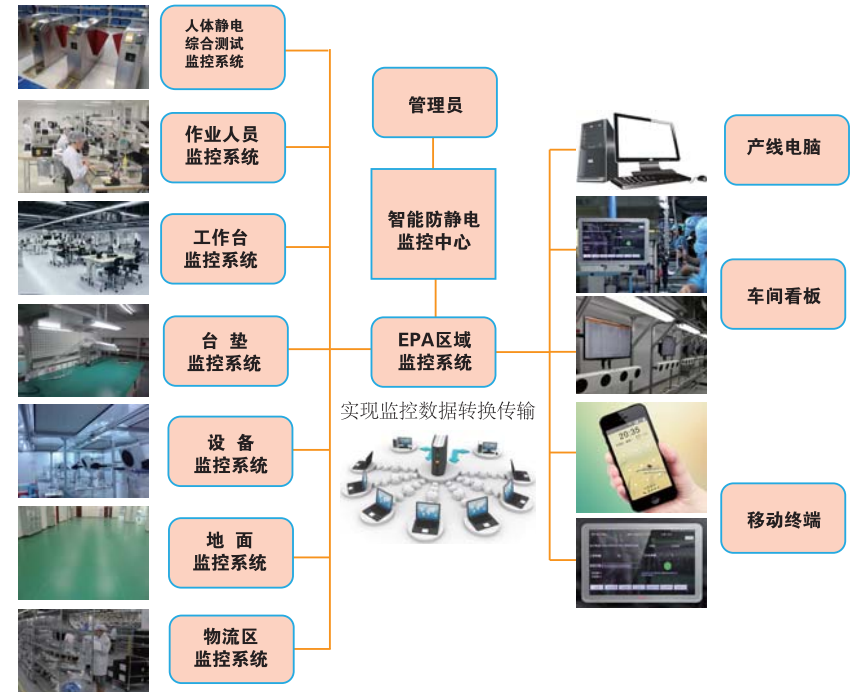
静电电场非接触检测系统 Non contact detection system for electrostatic field

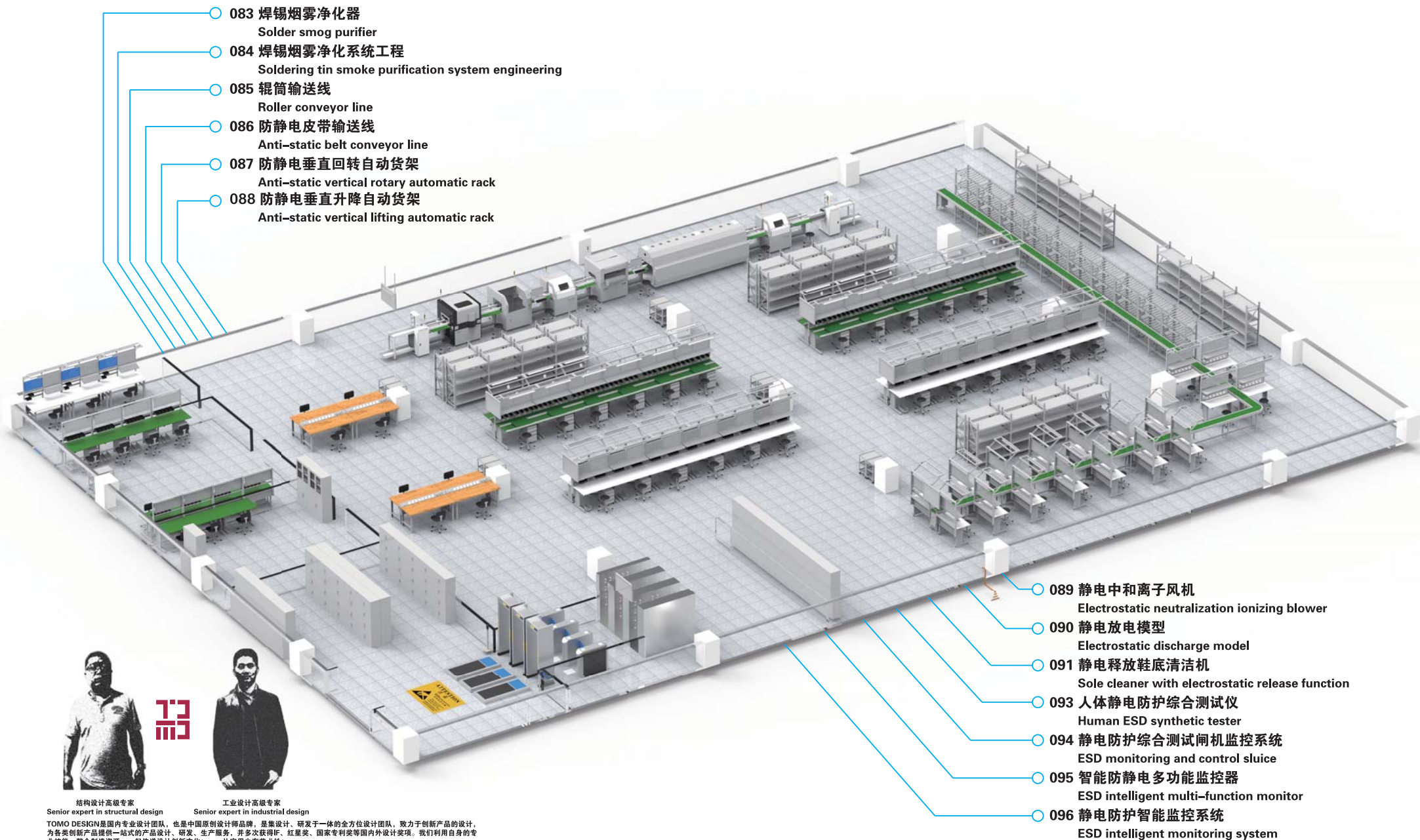
- 运用国际先进的静电电场传感器，实现远距离探测目标静电电场并获得精准的数字信息，使静电电可听可闻
- 配合静电防护装备的应用，可以有效的将静电防护区域静电电压控制在正负10伏以内
- 适用于进入静电防护区域的检测，并排查静电源，有效避免静电无法感知带来的危害
- The use of advanced international electrostatic field sensors to achieve remote detection of the target electrostatic field and obtain accurate digital information, so that the static electricity can be audible.
- With the application of the electrostatic protection equipment, the electrostatic voltage of the electrostatic protection area can be effectively controlled within the positive and negative 10V.
- It is suitable for the detection of the electrostatic protection area and the static power supply, which can effectively avoid the harm caused by the static electricity.



防静电智能监测管理系统 Anti static intelligent monitoring and management system

- 高端智能继承电路设计，内设TVS静电防护器件，保证产品自身不受静电损坏
- 静电接地线路、人体静电通接地通路实时连续性智能监测
- 实时监测，静电实时安全泄放，使人体静电电压低于10V
- 软件自动生成日志，事件实时记录，可实现问题可追溯，方便生产过程及时调整改进
- High end intelligent inheritance circuit design, set up TVS electrostatic protection device to ensure that the product itself is not damaged by static electricity
- Real time continuous intelligent monitoring of static grounding circuit and human electrostatic connection ground path
- Real time monitoring, real-time static discharge of static electricity, the static voltage of human body is less than 10V
- The software automatically generates the log, the event is recorded in real time, the problem can be traced, and the production process can be adjusted and improved in time.





- 083 焊锡烟雾净化器
Solder smog purifier
- 084 焊锡烟雾净化系统工程
Soldering tin smoke purification system engineering
- 085 辊筒输送线
Roller conveyor line
- 086 防静电皮带输送线
Anti-static belt conveyor line
- 087 防静电垂直回转自动货架
Anti-static vertical rotary automatic rack
- 088 防静电垂直升降自动货架
Anti-static vertical lifting automatic rack

- 089 静电中和离子风机
Electrostatic neutralization ionizing blower
- 090 静电放电模型
Electrostatic discharge model
- 091 静电释放鞋底清洁机
Sole cleaner with electrostatic release function
- 093 人体静电防护综合测试仪
Human ESD synthetic tester
- 094 静电防护综合测试闸机监控系统
ESD monitoring and control sluice
- 095 智能防静电多功能监控器
ESD intelligent multi-function monitor
- 096 静电防护智能监控系统
ESD intelligent monitoring system



结构设计高级专家

Senior expert in structural design



工业设计高级专家

Senior expert in industrial design



TOMO DESIGN是国内专业设计团队，也是中国原创设计师品牌，是集设计、研发于一体的全方位设计团队，致力于创新产品的设计，为各类创新产品提供一站式的产品设计、研发、生产服务，并多次获得IF、红星奖、国家专利奖等国内外设计奖项。我们利用自身的专业技能，整合制造资源，一起传递设计创新文化！——让实用也有艺术性！
TOMO DESIGN is a professional design team in China, and also an original designer brand in China. It is an omnibearing design team integrating design, research and development, and is committed to innovative product design. It provides one-stop product design, R & D and production services for all kinds of innovative products, and has won IF, Red Star Awards, national patent awards and other design awards at home and abroad. We use our own expertise Industry skills, integration of manufacturing resources, together with the design of innovative culture! — make it practical and artistic!